

TECHNICAL MANUAL

ORGANIZATIONAL, DIRECT SUPPORT, AND GENERAL SUPPORT
MAINTENANCE REPAIR PARTS AND SPECIAL TOOLS LISTS
FOR

MAINTENANCE KIT,
ELECTRONIC EQUIPMENT MK-1004/ARC (Modified)
(NSN 5821-00-926-7292)

TECHNICAL MANUAL }
NO. 11-6625-1635-24P }

HEADQUARTERS
DEPARTMENT OF THE ARMY
WASHINGTON, DC, 28 December 1978

ORGANIZATIONAL, DIRECT SUPPORT, AND GENERAL SUPPORT MAINTENANCE
REPAIR PARTS AND SPECIAL TOOLS LISTS
FOR
MAINTENANCE KIT, ELECTRONIC EQUIPMENT MK-1004/ARC (Modified)
(NSN 5821-00-926-7292)

Current as of 18 August 1978

REPORTING OF ERRORS

You can improve this manual by recommending improvements using DA Form 2028-2 located in the back of the manual. Simply tear out the self addressed form, fill it out as shown on the sample, fold it where shown, and drop it in the mail.

If there are no blank DA Form 2028-2 in the back of your manual, use the standard DA Form 2028 (Recommended Changes to Publications and Blank Forms) and forward to the Commander, US Army Communications and Electronics Materiel Readiness Command, ATTN: DRSEL-ME-MQ, Fort Monmouth, NJ 07703.

In either case a reply will be furnished direct to you.

Table of Contents

	Page	Illus Figure
SECTION I. Introduction	1	
II. Repair parts list	5	
GROUP 0 0 Maintenance Kit, Electronic Equipment MK-1004/ARC (Modified)	4	1
01 Panel, Test, Electrical SB-3003(P)/ARC	8	2
02 Intercommunication Set C-1611D/AIC (See TM 11-5831-201-20P and TM 11-5831-201-34P for Parts		
03 Control, Radio Set C-7241/ARC	16	3-5
SECTION III. Special tools list (Not applicable)		
IV. National stock number and part number index	27	

*This manual together with TM 11-6625-2609-24P, 15 December 1978, supersedes TM 11-6625-1635-24P, 20 August 1973.

SECTION I INTRODUCTION

1. Scope

This manual lists spares and repair parts; special tools; special test, measurement, and diagnostic equipment (TMDE), and other special support equipment required for performance of organizational, direct support, and general support maintenance of the MK-1004/ARC.

It authorizes the requisitioning and issue of spares and repair parts as indicated by the source and maintenance codes.

2. General

This Repair Parts and Special Tools List is divided into the following sections:

a. Section II. Repair Parts List. A list of spares and repair parts authorized for use in the performance of maintenance. The list also includes parts which must be removed for replacement of the authorized parts. Parts lists are composed of functional groups in numeric sequence, with the parts in each group listed in figure and item number sequence.

b. Section III. Special Tools List. Not applicable.

c. Section IV. National Stock Number and Part Number Index. A list, in National item identification number (NIIN) sequence, of all National stock numbers (NSN) appearing in the listings, followed by a list, in alphameric sequence, of all part numbers appearing in the listings. National stock numbers and part numbers are cross-referenced to each illustration figure and item number appearance.

3. Explanation of Columns

a. Illustration. This column is divided as follows:

(1) *Figure number.* Indicates the figure number of the illustration on which the item is shown.

(2) *Item number.* The number used to identify item called out in the illustration.

b. Source, Maintenance, and Recoverability (SMR) Codes.

(1) *Source code.* Source codes indicate the manner of acquiring support items for maintenance, repair, or overhaul of end items. Source codes are entered in the first and second positions of the Uniform SMR Code format as follows:

<i>Code</i>	<i>Definition</i>
PA-Item procured and stocked for anticipated or known usage.	
PD-Support item, excluding support equipment, procured for initial issue or outfitting and stocked only for subsequent or additional initial issues or outfittings. Not subject to automatic replenishment.	
XD-A support item that is not stocked. When required, item will be procured through normal supply channels.	

NOTE

Cannibalization or salvage may be used as a source of supply for any items source coded above except those coded XA and aircraft support items as restricted by AR 700-42.

(2) *Maintenance code.* Maintenance codes are assigned to indicate the levels of maintenance authorized to USE and REPAIR support items. The maintenance codes are entered in the third and fourth positions of the Uniform SMR Code format as follows:

(a) The maintenance code entered in the third position will indicate the lowest maintenance level authorized to remove, replace, and use the support item. The maintenance code entered in the third position will indicate one of the following levels of maintenance:

<i>Code</i>	<i>Application/Explanation</i>
O-Support item is removed, replaced, used at the organizational level.	
F-Support item is removed, replaced, used at the direct support level.	
(b) The maintenance code entered in the fourth position indicates whether the item is to be repaired and identifies the lowest maintenance level with the capability to perform complete repair (i.e., all authorized maintenance functions). This position will contain one of the following maintenance codes:	

<i>Code</i>	<i>Application/Explanation</i>
F	The lowest maintenance level capable of complete repair of the support item is the direct support level.
D	The lowest maintenance level capable of complete repair of the support item is the depot level.
Z	Nonreparable. No repair is authorized.

(3) *Recoverability code.* Recoverability codes are assigned to support items to indicate the disposition action on unserviceable items. The recoverability code is entered in the fifth position of the Uniform SMR Code format as follows:

Recoverability

<i>Codes</i>	<i>Definition</i>
Z	Nonreparable item. When unserviceable, condemn and dispose at the level indicated in position 3.
F	Reparable item. When uneconomically repairable, condemn and dispose at the direct support level.
D	Reparable item. When beyond lower level repair capability, return to depot. Condemnation and disposal not authorized below depot level.

c. National Stock Number. Indicates the National stock number assigned to the item and will be used for requisitioning purposes.

d. Part Number. Indicates the primary number used by the manufacturer (individual, company, firm, corporation, or Government activity), which controls the design and characteristics of the item by means of its engineering drawings, specifications, standards, and inspection requirements to identify an item or range of items.

NOTE

When a stock numbered item is requisitioned, the repair part received may have a different part number than the part being replaced.

e. Federal Supply Code for Manufacturer (FSCM). The FSCM is a 5-digit numeric code listed in SB 708-42 which is used to identify the manufacturer, distributor, or Government agency, etc.

f. Description. Indicates the Federal item name and, if required, a minimum description to identify the item.

g. Unit of Measure (U/M). Indicates the standard of the basic quantity of the listed item as used in performing the actual maintenance function. This measure is expressed by a two-character alphabetical abbreviation (e.g., ea, in, pr, etc). When the unit of measure differs from the unit of issue, the lowest unit of issue that will satisfy the required units of measure will be requisitioned.

h. Quantity Incorporated in Unit. Indicates the quantity of the item used in the breakout shown on the illustration figure, which is prepared for a functional group, subfunctional group, or an assembly. A “V” appearing in this column in lieu of a quantity indicates that no specific quantity is applicable, (e.g., shims, spacers, etc).

4. Special Information

The following publications pertain to the MK-1004/ARC and its components:

- TM 11-5831-201-20, Control, Intercommunication Set C-1611D/AIC and Discriminator, Discrete Signal MD-736/A
- TM-11-5831-201-20P, Control, Intercommunication Set C-1611D/AIC and Discriminator, Discrete Signal MD-736/A
- TM 11-5831-201-34P, Control, Intercommunication Set C-1611D/AIC and Discriminator, Discrete MD-736/A
- TM 11-5831-201-35, Control, Intercommunication Set C-1611D/AIC and Discriminator, Discrete Signal MD-736/A
- TM 11-6625-1635-12, Maintenance Kit, Electronic Equipment MK-1004/ARC
- TM 11-6625-1635-35, Maintenance Kit, Electronic Equipment MK-1004/ARC

5. How to Locate Repair Parts

a. When National stock number or part number is unknown.

(1) *First.* Using the table of contents, determine the functional group within which the item belongs. This is necessary since illustrations are prepared for functional groups and listings are divided into the same groups.

(2) *Second.* Find the illustration covering the functional group to which the item belongs.

(3) *Third.* Identify the item on the illustration and note the illustration figure and item number of the item.

(4) *Fourth.* Using the Repair Parts Listing, find the figure and item number noted on the illustration.

b. When National stock number or part number is known.

(1) *First.* Using the Index of National Stock Numbers and Part Numbers, find the pertinent National stock number or part number. This index is in NIIN sequence followed by a list of part numbers in alphamenc sequence, cross-referenced to the illustration figure number and item number.

(2) *Second.* After finding the figure and item number, locate the figure and item number in the repair parts list.

6. Abbreviations

Not applicable.

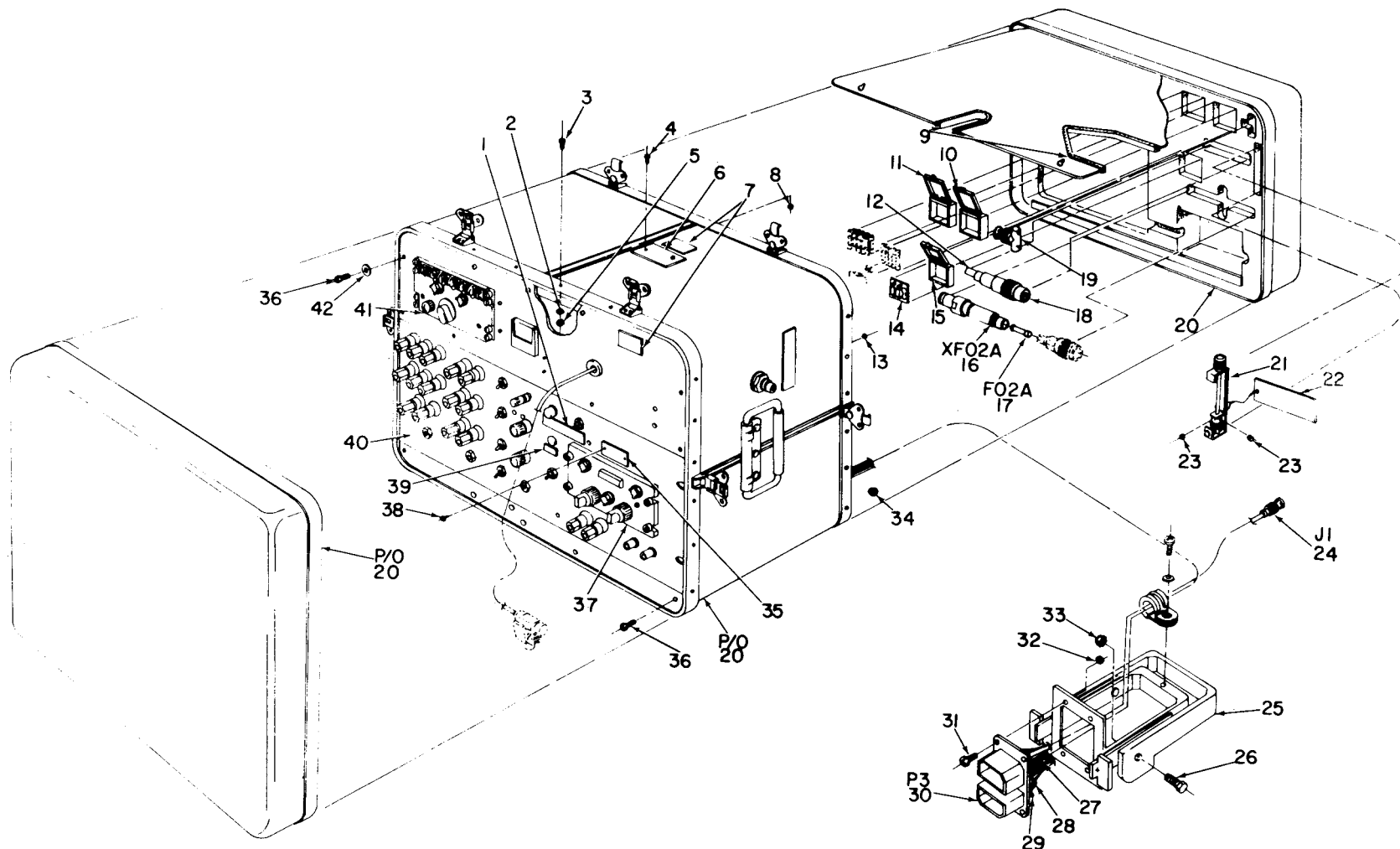
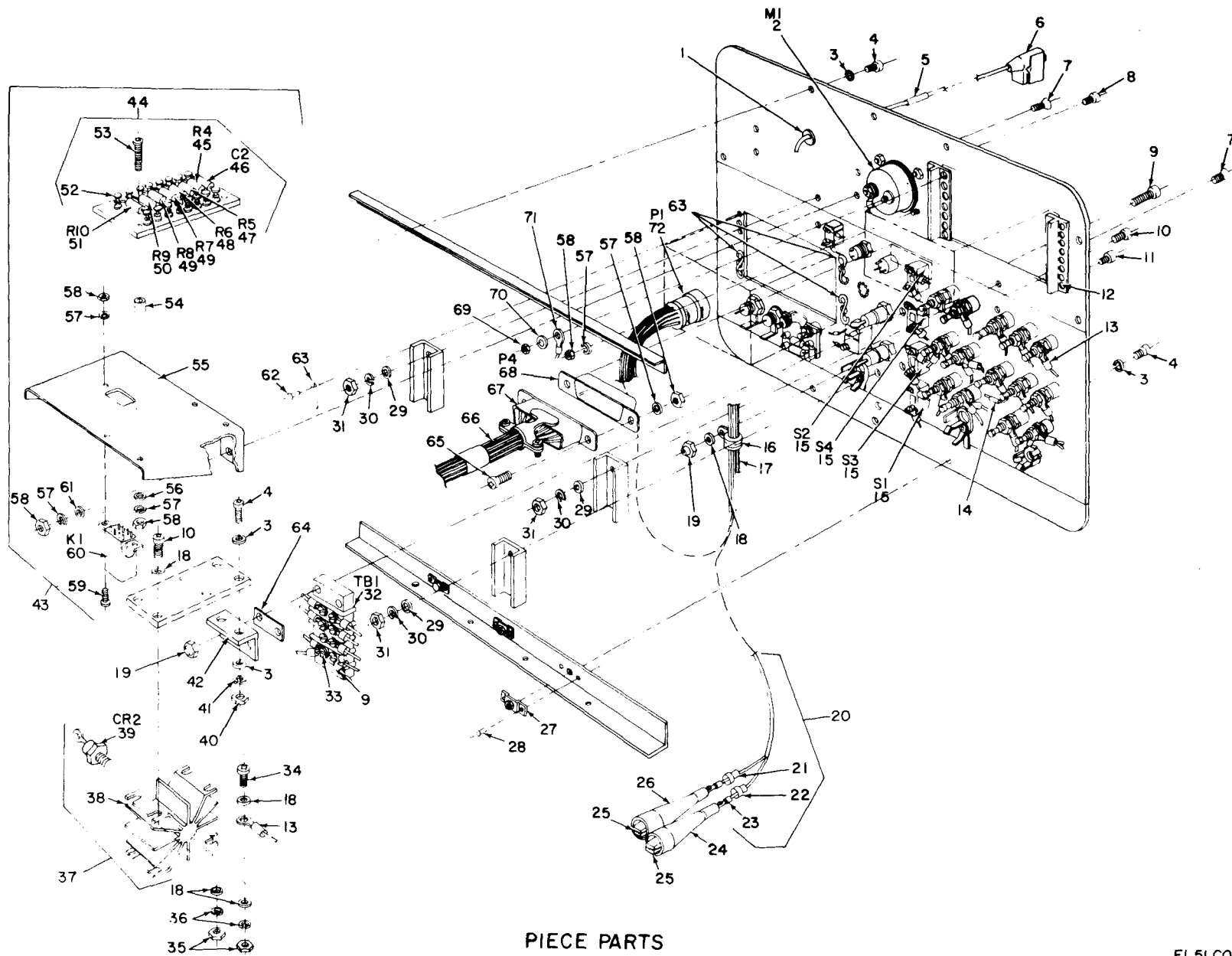


Figure 1. Maintenance Kit, Electronic Equipment MK-1004/ARC (Modified).

EL5LC001

SECTION II (1) ILLUSTRATION (A) (B) FIG ITEM NO NO		(2) SMR CODE	(3) NATIONAL STOCK NUMBER	(4) PART NUMBER	(5) FSCM	TM11-6625-1635-24P (6) DESCRIPTION	(7) USABLE ON CODE U/M	(8) QTY INC IN UNIT
						GROUP 00 MAINTENACE KIT,ELECTRONIC		
						EQUIPMENT MK-1004/ARC (MODIFIED)		
1	1	XDFZZ		R260147-1	04071	DECAL	EA	1
1	2	PAFZZ	5310-00-933-8118	MS35338-135	96906	WASHER,LOCK	EA	8
1	3	PAFZZ	5305-00-054-5653	MS51957-19	96906	SCREW,MACHINE	EA	8
1	4	PAFZZ	5305-00-054-5648	MS51957-14	96906	SCREW,MACHINE	EA	2
1	5	PAFZZ	5310-00-934-9748	MS35649-244	96906	NUT,PLAIN,HEXAGON	EA	8
1	6	XDFZZ		267498-0002	65597	PLATE,IDENT	EA	1
1	7	XDFZZ		R362188-4	04071	DECAL	EA	2
1	8	PAFZZ	5310-00-857-5548	MS21044D04	96906	NUT,SELF-LOCKING	EA	2
1	9	PAFZZ	5325-00-074-3301	G51HB	03296	GROMMET, PLASTIC	EA	2
1	10	PAFZZ	8115-00-708-0112	083447-0001	65597	BOX, PLASTIC, SMALL	EA	1
1	11	XDFZZ		083448-0001	65597	BOX, PLASTIC, SMALL	EA	1
1	12	XDFZZ		266461-0001	65597	PLATE,IDENT	EA	1
1	13	PAFZZ	5310-00-622-1724	68-1660-26	72962	NUT, SELF-LOCKING	EA	2
1	14	PAFZZ	5821-00-933-9606	RF218ARC	80058	DETECTOR, RADIO	EA	1
1	15	XDFZZ		1CA	28307	BOX, PLASTIC, SMALL	EA	1
1	16	PAFZZ	5920-00-636-0679	11509A	28480	FUSEHOLDER	EA	1
1	17	PAOZZ	5920-00-232-3675	F01A250V1-16A	81349	FUSE, CARTRIDGE	EA	1
1	18	PAFZZ	5985-00-491-4305	700060-0002	65597	ATTENUATOR, FIXED	EA	1
1	19	PAFZZ	5935-00-201-2411	UG274AU	81349	ADAPTER, CONNECTOR	EA	1
1	20	PAFFF	5821-00-933-9607	117875-0001	65597	CASE,ELEC EQPT	EA	1
1	21	PAFZZ	5120-00-949-6692	67606-1	65597	ALIGNMENT,TOOL	EA	A
1	22	XDFZZ		104826-0001	65597	TAF, CAUTION	EA	1
1	23	PAFZZ	5305-00-717-6955	MS51963-1	96906	SETSCREW	EA	2
1	24	PAFZZ	5935-00-835-0508	UG88GU	80058	CONNECTOR, PLUG	EA	1
1	25	XDFZZ		R361682-1	04071	EXTRACTOR ASSEMBLY	EA	1
1	26	PAFZZ	5306-00-087-1628	MS16208-7	96906	BOLT,MACHINE	EA	2
1	27	PAFZZ	5940-00-144-2269	320562	00779	SPLICE, CONDUCTOR	EA	4
1	28	XDFZZ	5995-00-426-1102	R362557-1	04071	LEAD, ELECTRICAL	EA	1
1	29	PAFZZ	5940-00-838-2651	MS35431-6	96906	TERMINAL, LUG	EA	1
1	30	PAFZZ	5935-00-951-5033	DPX2F40C1SF40C1S 3380003	71468	CONNECTOR, PLUG	EA	1
1	31	PAFZZ	5305-00-068-6605	MS24693C6	96906	SCREW, MACHINE	EA	4
1	32	PAFZZ	5310-00-982-5000	MS21045C04	96906	NUT, SELF-LOCKING	EA	4
1	33	PAFZZ	5310-00-241-6604	MS17830-4C	96906	NUT, SELF-LOCKING	EA	2
1	34	PAFZZ	5310-00-905-3081	MS2108303	96906	NUT, SELF-LOCKING	EA	10
1	35	XDFZZ		266022-0001	65597	PLATE,IDENT	EA	1
1	36	PAFZZ	5305-00-059-3659	MS51958-63	96906	SCREW,MACHINE	EA	10
1	37	PAFFF	5821-00-933-9605	C7241ARC	80058	CONTROL,RADIO SET	EA	1

SECTION II		TM11-6625-1635-24P						
(1)	(2)	(3)	(4)	(5)	(6)	(7)	(8)	
ILLUSTRATION								
(A)	(B)	NATIONAL			DESCRIPTION		QTY	
FIG	ITEM	STOCK	PART				INC	
NO	NO	NUMBER	NUMBER	FSCM		USABLE ON CODE U/M	IN	
							UNIT	
1	38	PAFZZ	5305-00-054-5638	MS51957-4	96906	SCREW, MACHINE	EA	2
1	39	XDFZZ		R260139-1	04071	DECAL	EA	1
1	40	XDFFF	5821-00-933-9608	S83003PARC	80058	PANEL, SET	EA	1
1	41	PDFDD	5831-00-933-9822	C1611DAIC	80058	CONTROL, INTERCOM	EA	1
1	42	PAFZZ	5310-00-619-1148	MS15795-808	96906	WASHER, FLAT	EA	8



PIECE PARTS

Figure 2. Panel, Test, Electrical SB-3003(P)/ARC (Sheet 1 of 2).

EL5LC002

TM11-6625-1635-24P

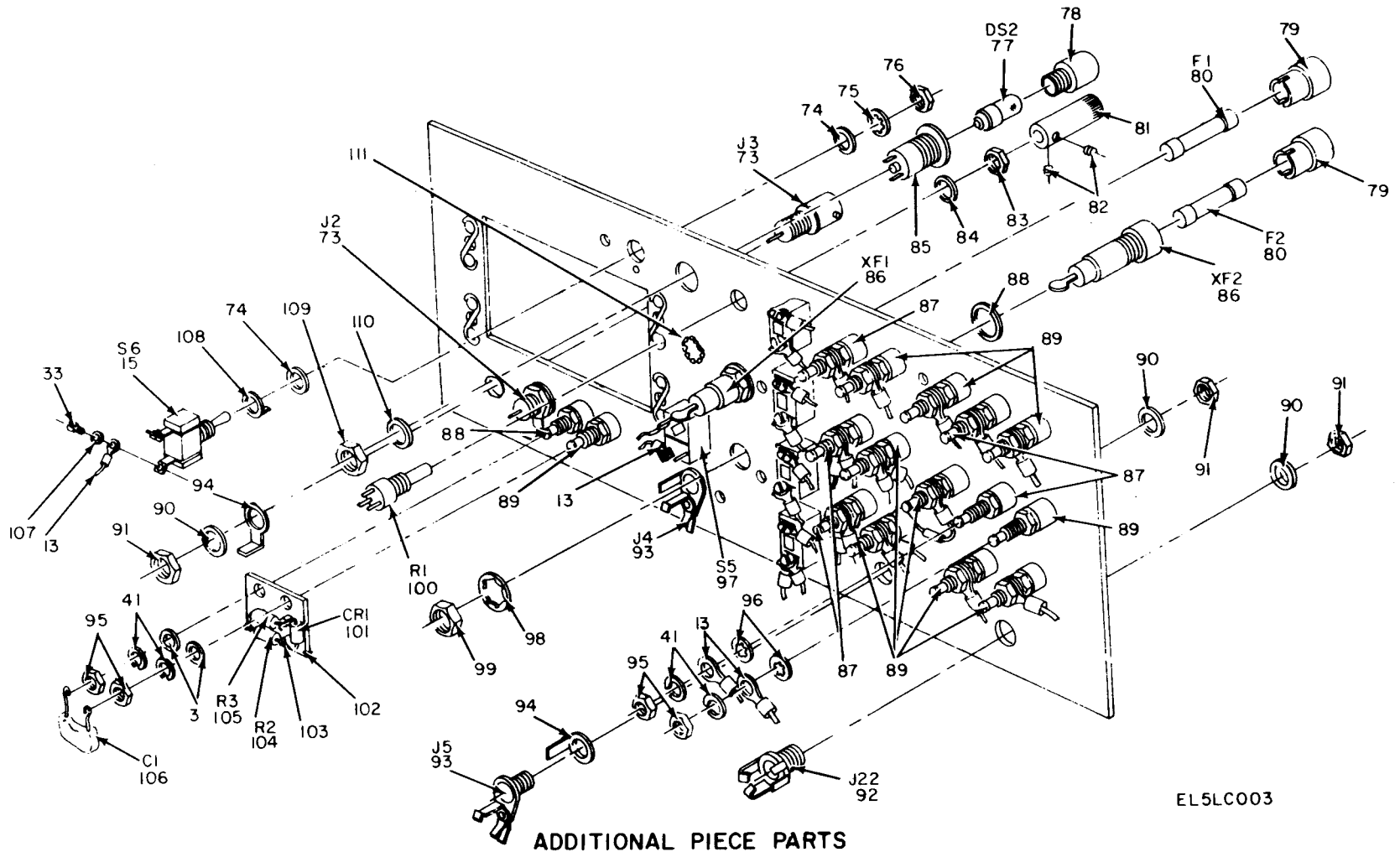


Figure 2. Panel, Test, Electrical SB-3003(P)/ARC (Sheet 2 of 2).

SECTION II (1) ILLUSTRATION (A) (B) FIG ITEM NO NO		(2) SMR CODE	(3) NATIONAL STOCK NUMBER	(4) PART NUMBER	(5) FSCM	TM11-6625-1635-24P (6) DESCRIPTION	(7) USABLE ON CODE U/M	(8) QTY INC IN UNIT
						GROUP 01 PANEL, TEST, ELECTRICAL		
						SB-3003(P)/ARC		
2	1	PAFZZ	5325-00-276-6228	MS35489-9	96906	GROMMET, RUBBER	EA	1
2	2	PAFZZ	6625-00-931-4489	1212-02435	55026	AMMETER	EA	1
2	3	PAFZZ	5310-00-619-1148	MS15795-808	96906	WASHER, FLAT	EA	12
2	4	PAFZZ	5305-00-059-3660	MS51958-64	96906	SCREW, MACHINE	EA	12
2	5	XDFZZ		R260003-1	04071	SLEEVE, MARKER	EA	1
2	6	PAFZZ	5935-00-553-9352	U94AU	80058	CONNECTOR, PLUG	EA	1
2	7	PAFZZ	5305-00-088-9666	MS24693C51	96906	SCREW, MACHINE	EA	2
2	8	PAFZZ	5305-00-054-5649	MS51957-15	96906	SCREW, MACHINE	EA	6
2	9	PAFZZ	5305-00-054-6656	MS51957-32	96906	SCREW, MACHINE	EA	4
2	10	PAFZZ	5305-00-054-6654	MS51957-30	96906	SCREW, MACHINE	EA	5
2	11	PAFZZ	5305-00-054-6671	MS51957-46	96906	SCREW, MACHINE	EA	4
2	12	PAFZZ	5320-00-117-6829	MS20470AD4-7	96906	RIVET, SOLID	EA	6
2	13	PAFZZ	5940-00-204-8966	MS25036-102	96906	TERMINAL, LUG	EA	34
2	14	PAFZZ	5940-00-688-6017	323975	00779	SPLICE, CONDUCTOR	EA	1
2	15	PAFZZ	5930-00-655-1514	MS35058-22	96906	SWITCH, TOGGLE	EA	5
2	16	PAFZZ	5340-00-682-1617	MS21919DG12	96906	CLAMP, LOOP	EA	1
2	17	XDFFF		432956-0001	65597	WIRING HARNESS	EA	1
2	18	PAFZZ	5310-00-722-5998	MS15795-805	96906	WASHER, FLAT	EA	19
2	19	LLPAFZZ	5310-00-857-5547	MS21044D06	96906	NUT, SELF-LOCKING	EA	4
2	20	XDFFF		432959-0001	65597	CABLE ASSY, PWR	EA	1
2	21	XDFZZ	5975-00-405-0430	R260003-2	04071	SLEEVE, MARKER	EA	1
2	22	XDFZZ	5975-00-405-0429	R260003-3	04071	SLEEVE, MARKER	EA	1
2	23	PAFZZ	5940-00-557-1629	31888	00779	TERMINAL, LUG	EA	2
2	24	PAFZZ	5970-00-410-2548	028255-0002	65597	CABLE NIPPLE	EA	1
2	25	PAFZZ	5999-00-204-8350	25C	6545	CLIP, ELECTRICAL	EA	2
2	26	PAFZZ	5975-00-988-0649	26BLACK	76545	CABLE NIPPLE	EA	1
2	27	PAFZZ	5310-00-728-5502	MS21077-3	96906	NUT, SELF-LOCKING	EA	3
2	28	PAFZZ	5320-00-117-6937	MS20426AD3-3	96906	RIVET, SOLID	EA	6
2	29	PAFZZ	5310-00-880-5978	MS15795-807	96906	WASHER, FLAT	EA	18
2	30	PAFZZ	5310-00-933-8119	MS35338-137	96906	WASHER, LOCK	EA	6
2	31	PAFZZ	5310-00-934-9759	MS35649-284	96906	NUT, PLAIN, HEXAGON	EA	10
2	32	PAFZZ	5940-00-318-6586	601-3700-4	75382	TERMINAL BOARD	EA	1
2	33	XDFZZ		101052-0200	65597	SCREW, MACHINE	EA	22
2	34	PAFZZ	5305-00-054-6652	MS51957-28	96906	SCREW, MACHINE	EA	1
2	35	PAFZZ	5310-00-934-9761	MS35649-264	96906	NUT, PLAIN, HEXAGON	EA	9
2	36	PAFZZ	5310-00-929-6395	MS35338-136	96906	WASHER, LOCK	EA	5
2	37	XDFFF		R362553-1	04071	HEAT SINK ASSEMBLY	EA	1
2	38	PAFZZ	5999-00-829-2683	NC302M	05820	HEAT SINK	EA	1

SECTION II (1) ILLUSTRATION (A) FIG NO		(2) (B) ITEM NO	(3) NATIONAL STOCK NUMBER	(4) PART NUMBER	(5) FSCM	TM11-6625-1635-24P (6) DESCRIPTION	(7) USABLE ON CODE U/M	(8) QTY INC IN UNIT
2	39	PAFZZ	5961-00-935-4912	JAN1N3890	81349	SEMICONDUCTOR	EA	1
2	40	PAFZZ	5310-00-934-9765	MS35650-304	96906	NUT,PLAIN,HEXAGON	EA	2
2	41	PAFZZ	5310-00-933-8120	MS35338-138	96906	WASHER, LOCK	EA	19
2	42	PAFZZ	5821-00-409-8193	R361820-1	04071	BRACKET ASSEMBLY	EA	1
2	43	XDFFF		R454655-1	04071	RELAY ASSEMBLY	EA	1
2	44	XDFFF		R362631-1	04071	ELECTRONIC ASSY	EA	1
2	45	PAFZZ	5905-00-131-1256	RCR32G820JS	81349	RESISTOR, FIXED	EA	1
2	46	PAFZZ	5910-00-934-2924	M39003/01-2139	81349	CAPACITOR, FIXED	EA	1
2	47	PAFZZ	5905-00-247-7587	RCR32G121JR	81349	RESISTOR, FIXED	EA	1
2	48	PAFZZ	5905-00-465-0185	RCR32G330JR	81349	RESISTOR, FIXED	EA	1
2	49	PAFZZ	5905-00-110-0991	RCR32G151JS	81349	RESISTOR, FIXED	EA	2
2	50	PAFZZ	5905-00-106-1247	RCR32G221JS	81349	RESISTOR, FIXED	EA	1
2	51	PAFZZ	5905-00-228-6088	RCR32G331JS	81349	RESISTOR, FIXED	EA	1
2	52	PAFZZ	5940-00-764-1028	1724-3	71279	TERMINAL, STUD	EA	16
2	53	PAFZZ	5305-00-054-5652	MS51957-18	96906	SCREW, MACHINE	EA	4
2	54	PAFZZ	5365-00-632-3102	NAS43DD0-16	80205	SPACER, SLEEVE	EA	4
2	55	XDFZZ		R361815-1	04071	BRACKET	EA	1
2	56	PAFZZ	5310-00-782-1349	MS15795-804	96906	WASHER, FLAT	EA	4
2	57	PAFZZ	5310-00-933-8118	MS35338-135	96906	WASHER, LOCK	EA	20
2	58	PAFZZ	5310-00-934-9748	MS35649-244	96906	NUT, PLAIN, HEXAGON	EA	29
2	59	PAFZZ	5305-00-054-5648	MS51957-14	96906	SCREW, MACHINE	EA	4
2	60	PAFZZ	5945-00-068-6429	WKJ6026-5VDC	02288	RELAY, ARMATURE	EA	2
2	61	PAFZZ	5310-00-595-6211	MS15795-803	96906	WASHER, FLAT	EA	10
2	62	PAFZZ	5320-00-117-6938	MS20426AD3-4	96906	RIVET, SOLID	EA	8
2	63	XDFZZ		SX560	72794	LOCKSPRING	EA	4
2	64	PAFZZ	5940-00-502-8294	601SP	75382	PLATE, MENDING	EA	2
2	65	PAFZZ	5305-00-054-5647	MS51957-13	96906	SCREW, MACHINE	EA	4
2	66	XDFFF		R454658-1	04071	WIRING HARNESS	EA	1
2	67	PAFZZ	5935-00-716-6578	DC20963	71468	SHIELD, ELECTRICAL	EA	1
2	68	PAFZZ	5935-00-881-3241	DCM378C33	71468	CONNECTOR, PLUG	EA	1
2	69	PAFZZ	5310-00-429-2274	100008-1200	65597	NUT, PLAIN, HEXAGON	EA	11
2	70	PAFZZ	5310-00-255-5143	076020-1200	65597	WASHER, FLAT	EA	4
2	71	PAFZZ	5940-00-143-4771	MS25036-103	96906	TERMINAL, LUG	EA	10
2	72	PAFZZ	5935-00-914-2384	MS3116E20-39SY	96906	CONNECTOR, PLUG	EA	1
2	73	PAFZZ	5935-00-843-9008	MS35179-1094A	96906	CONNECTOR, RCPT, ELEC	EA	2
2	74	XDFZZ		2720-56225F505	06540	INSULATOR, DISK	EA	2
2	75	PAFZZ	5310-00-596-4892	3010-22	78189	WASHER, LOCK	EA	6
2	76	PAFZZ	5310-00-137-3068	MS25082C21	96906	NUT, PLAIN, HEXAGON	EA	6
2	77	PADZZ	6240-00-155-7836	MS25237-327	96906	LAMP, INCANDESCENT	EA	1
2	78	PADZZ	6210-00-842-1679	101-931	72619	LENS, INDICATOR LT	EA	1

SECTION II					TM11-6625-1635-24P			
(1)	(2)	(3)	(4)	(5)	(6)	(7)	(8)	
ILLUSTRATION					DESCRIPTION		QTY	
(A)	(B)	NATIONAL	PART				INC	
FIG	ITEM	STOCK	NUMBER	FSCM		USABLE ON CODE	IN	
NO	NO	NUMBER	NUMBER			U/M	UNIT	
2	79	PADZZ 5999-00-244-5150	9435F1-2	71400	CAP, ELECTRICAL	EA	2	
2	80	PAOZZ 5920-00-727-1452	F03832V120A	81349	FUSE, CARTRIDGE	EA	2	
2	81	PAOZZ 5355-00-914-1974	60848-1	65597	KNOB	EA	1	
2	82	PAOZZ 5305-00-805-9748	MS51053-112	96906	SETSCREW	EA	2	
2	83	PAFZZ 5310-00-550-1059	M4721	01121	NUT, PLAIN, HEXAGON	EA	1	
2	84	PAFZZ 5310-00-065-0179	M4748	01121	WASHER, LOCK	EA	1	
2	85	PAFZZ 6210-00-617-1551	101-5030-931	72619	LIGHT, INDICATOR	EA	1	
2	86	PAFZZ 5920-00-892-9311	FHN26G1	81349	FUSEHOLDER	EA	2	
2	87	PAFZZ 5940-00-269-2219	DF308C	58474	POST, BINDING	EA	1	
2	88	XDFZZ	076131-0000	65597	WASHER, NONMETALLINC	EA	2	
2	89	PAFZZ 5940-00-356-2493	DF30RC	58474	POST, BINDING	EA	10	
2	90	PAFZZ 5310-00-180-0277	MS35333-76	96906	WASHER, LOCK	EA	5	
2	91	XDFZZ	100022-0200	65597	NUT, PLAIN, HEXAGON	EA	6	
2	92	PAFZZ 5935-00-192-4729	JJ033	80058	JACK, TELEPHONE	EA	1	
2	93	PAFZZ 5935-00-504-4023	B113812	37942	JACK, TELEPHONE	EA	2	
2	94	XDFZZ	A131023-1	37942	TERMINAL, LUG	EA	4	
2	95	PAFZZ 5310-00-208-9255	MS21044C3	96906	NUT, PLAIN, HEXAGON	EA	17	
2	96	PAFZZ 5310-00-543-5933	MS35333-73	96906	WASHER, LOCK	EA	17	
2	97	PAFZZ 5930-00-655-1575	MS35059-22	96906	SWITCH, TOGGLE	EA	1	
2	98	PAFZZ 5310-00-534-0827	1224-02-2600	78189	WASHER, LOCK	EA	2	
2	99	PAFZZ 5310-00-085-3606	903-12	7595	NUT, PLAIN, HEXAGON	EA	2	
2	100	PAFZZ 5905-00-194-8342	GA2G032S103UA	01121	RESISTOR, VAR	EA	1	
2	101	PAFZZ 5961-00-170-4430	1N34A	80131	SEMICONDUCTOR	EA	1	
2	102	PAFZZ 5940-00-275-7854	601-5H	75382	TERMINAL BOARD	EA	1	
2	103	PAFZZ 5940-00-834-9660	ST1000SL	98291	TERMINAL, STUD	EA	20	
2	104	PAFZZ 5905-00-279-2650	RC32GF562J	81349	RESISTOR, FIXED	EA	1	
2	105	PAFZZ 5905-00-299-2020	RC32GF273J	81349	RESISTOR, FIXEED	EA	1	
2	106	PAFZZ 5910-00-138-1681	CK62BX102M	81349	CAPACITOR, FXD, CER	EA	1	
2	107	PAFZZ 5310-00-616-3555	MS35333-71	96906	WASHER, LOCK	EA	14	
2	108	PAFZZ 5310-00-999-4033	MS25081C4	96906	RING, LOCK, KEYED	EA	6	
2	109	PAFZZ 5310-00-255-5203	035692NUT	65597	NUT, PLAIN, HEXAGON	EA	1	
2	110	PAFZZ 5310-00-257-6215	035692LKW	65597	WASHER, LOCK	EA	2	
2	111	PAFZZ 5305-00-754-4546	9157788-29	18876	BUTTON, PLUG	EA	1	

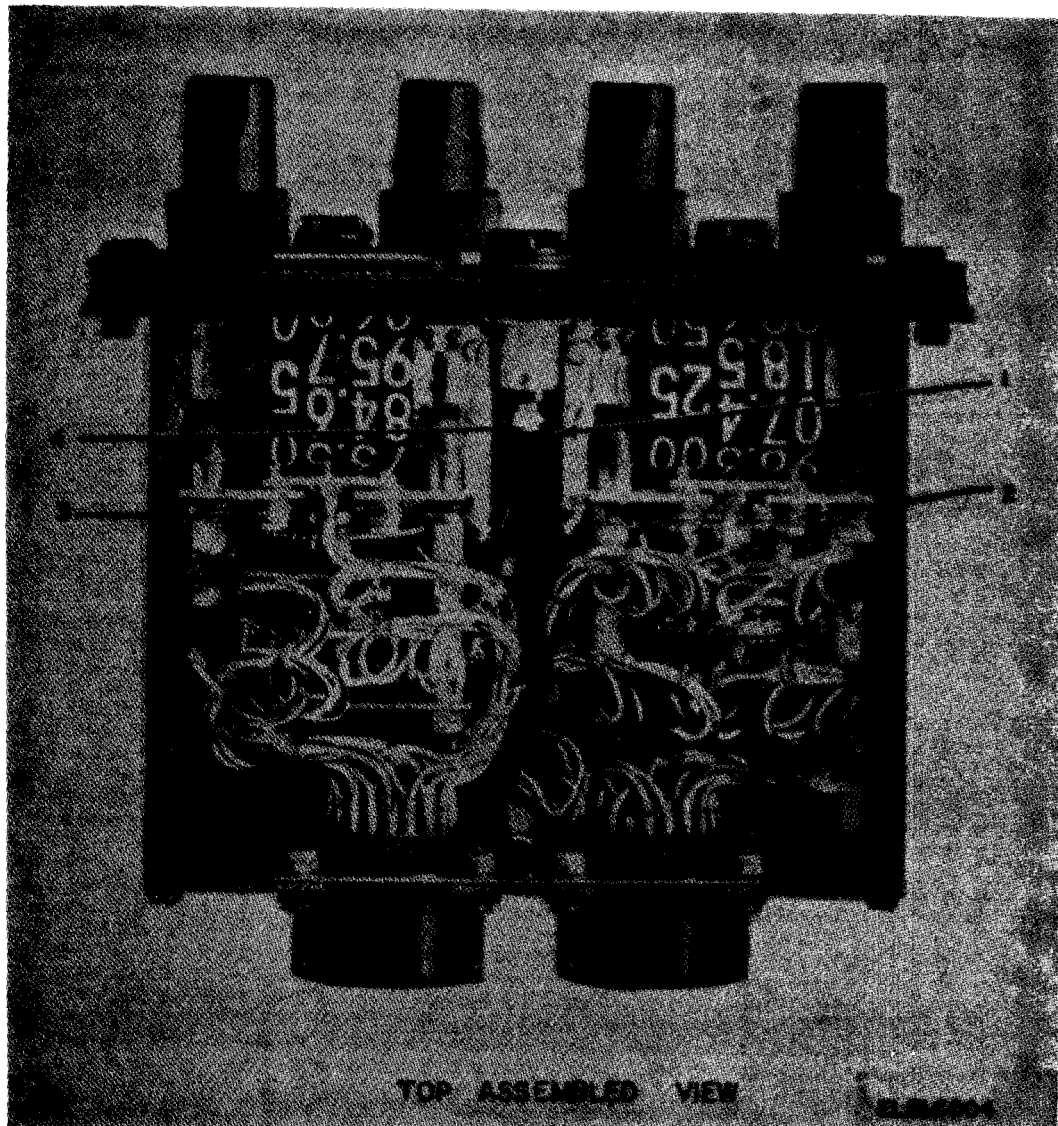


Figure 3. Control, Radio Set C-7241/ARC (Sheet 1 of 5).

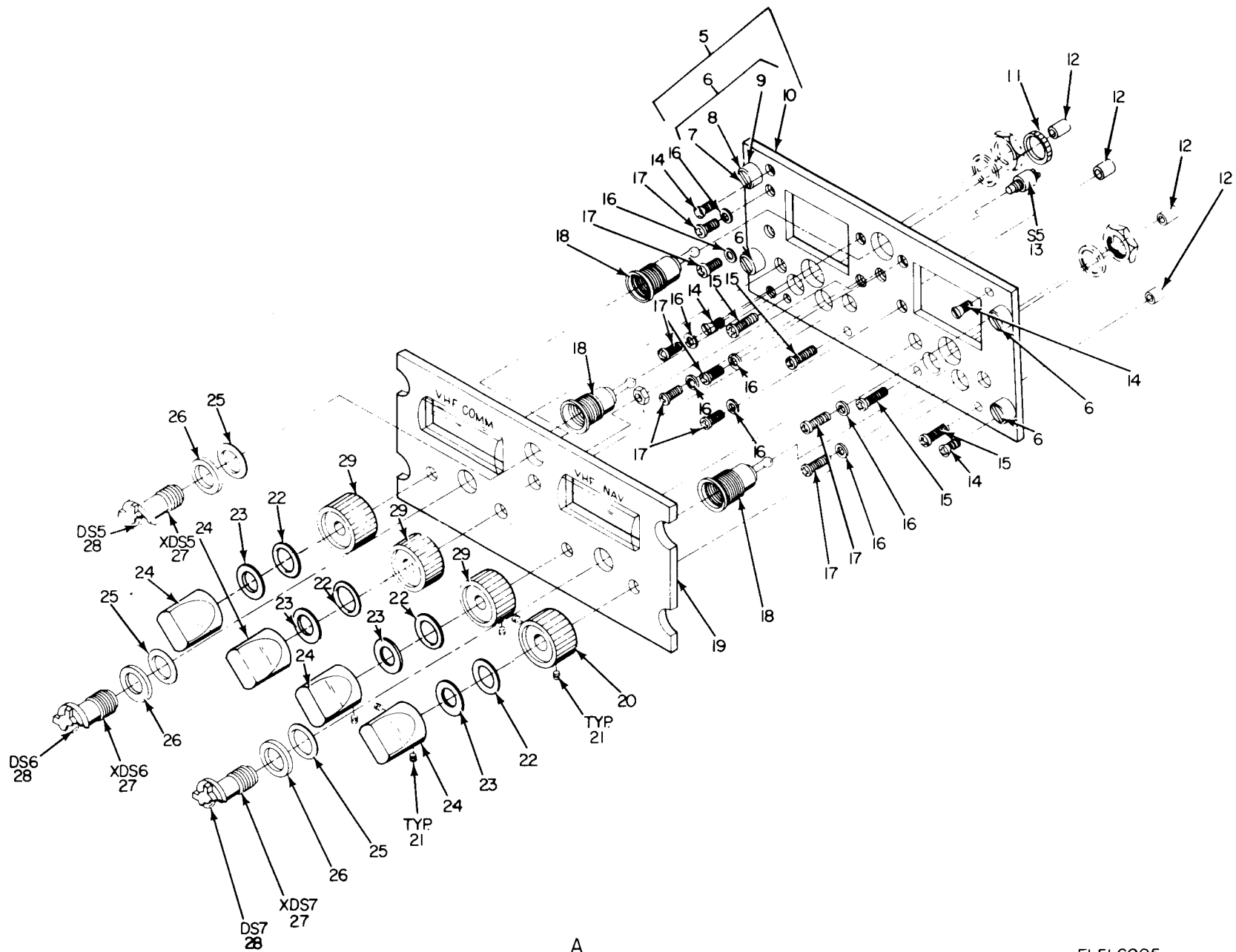
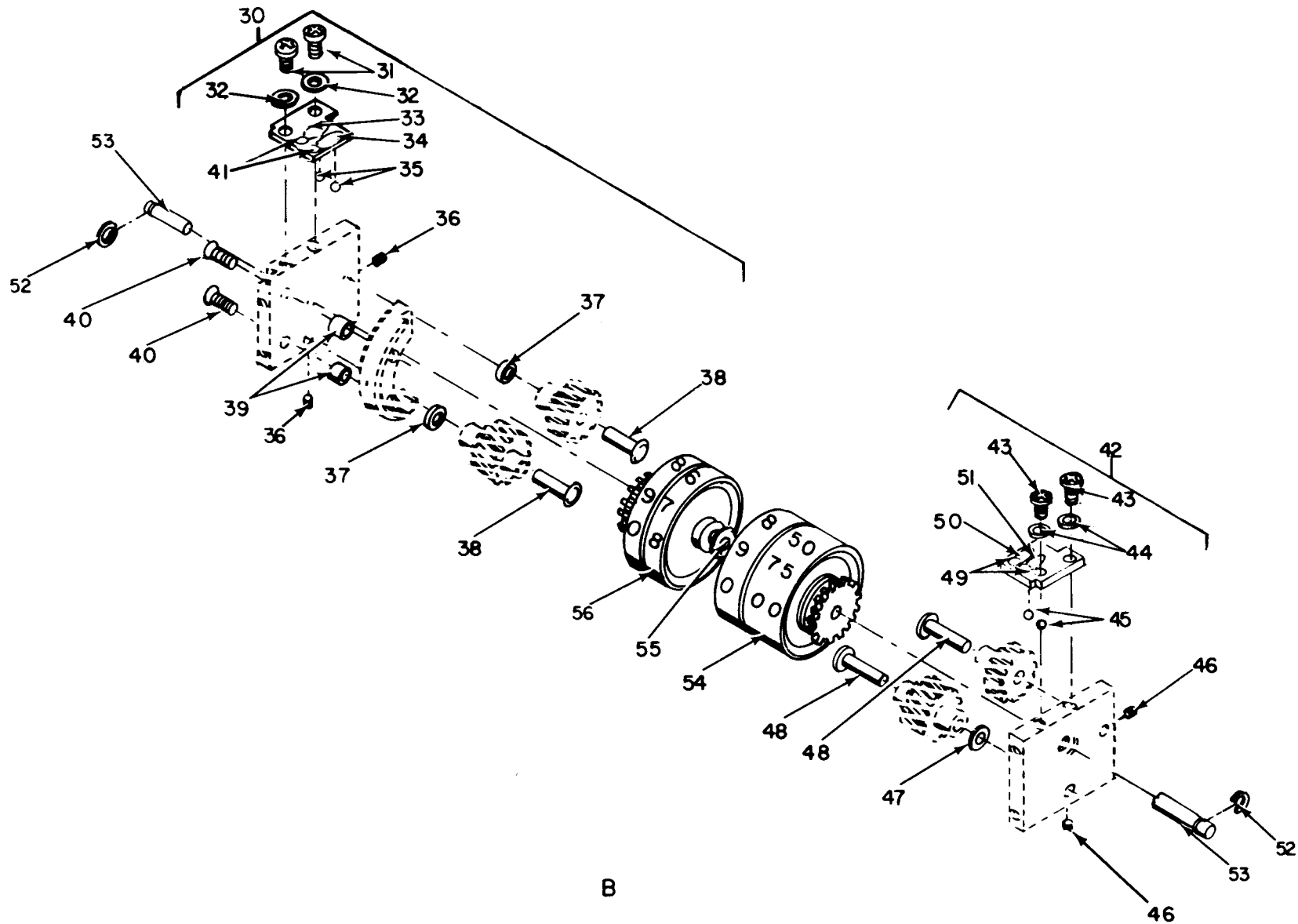


Figure 3. Control, Radio Set C-7241/ARC (Sheet 2 of 5).



EL5LC006

Figure 3. Control, Radio Set C-7241/ARC (Sheet 3 of 5).

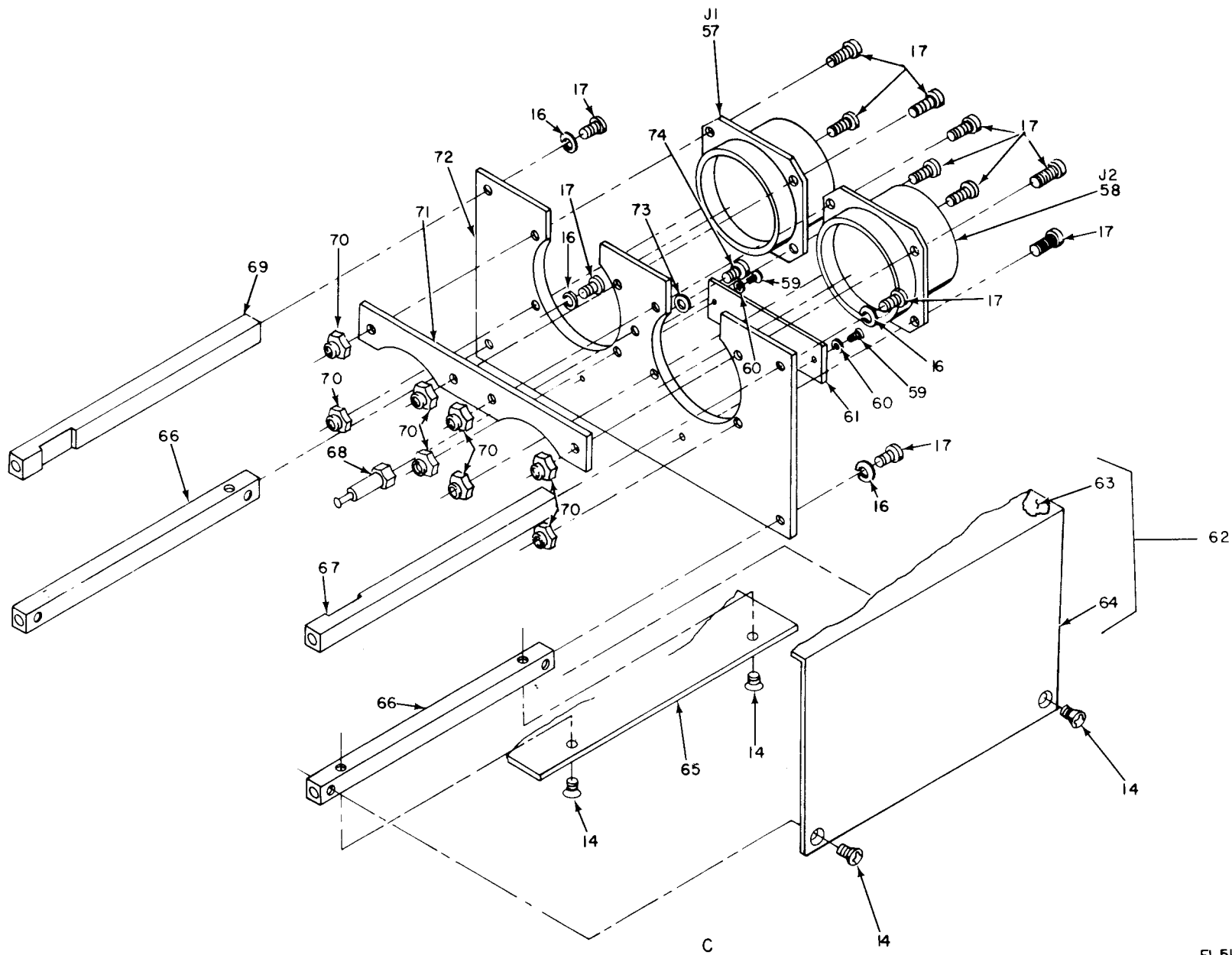
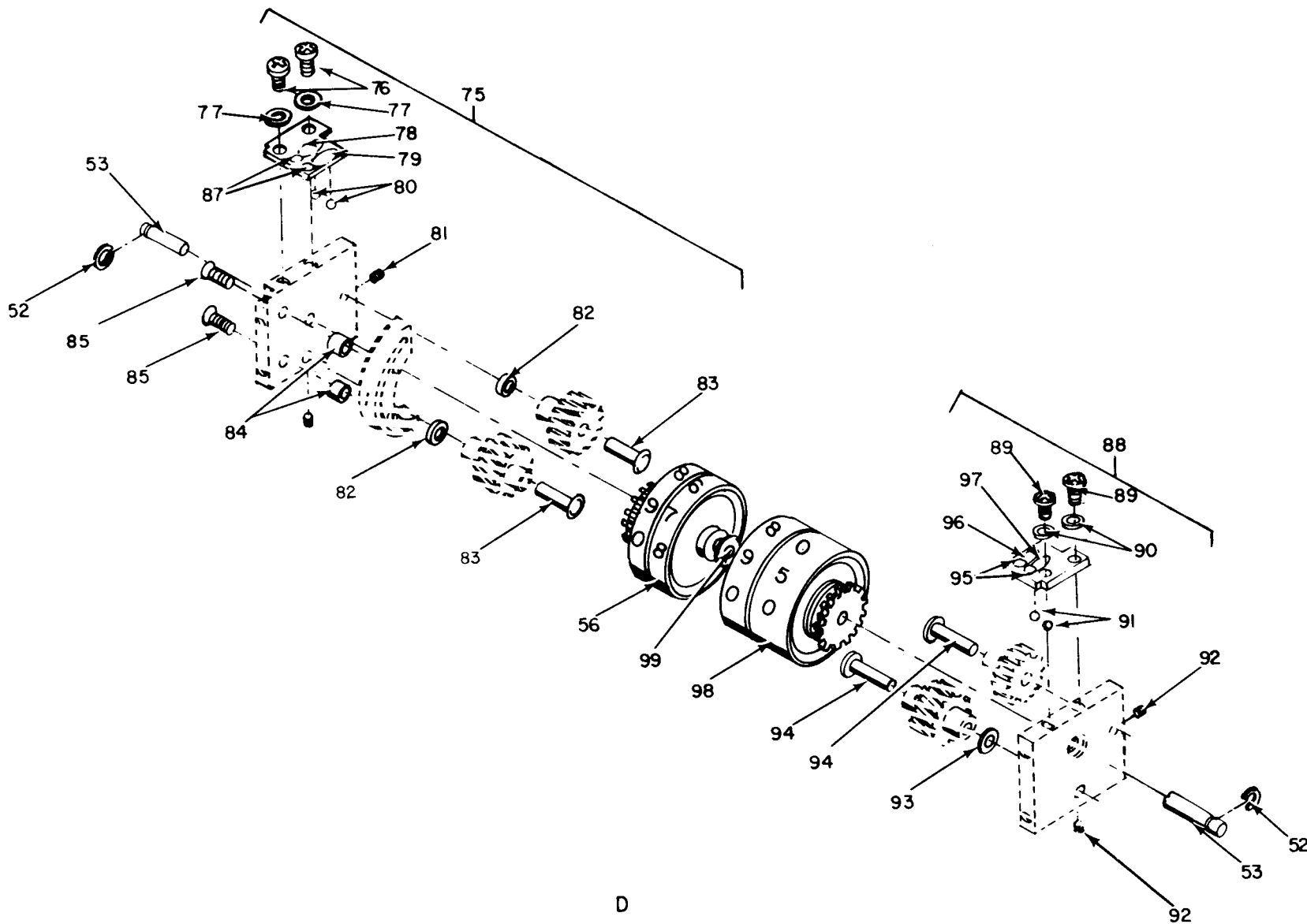


Figure 3. Control, Radio Set C-7241/ARC (Sheet 4 of 5).

EL5LC007

TM11-6625-1635-24P



EL5LC008

Figure 3. Control, Radio Set C-7241/ARC (Sheet 5 of 5).

SECTION II (1) ILLUSTRATION (A) (B) FIG ITEM NO NO		(2) SMR CODE	(3) NATIONAL STOCK NUMBER	(4) PART NUMBER	(5) FSCM	TM11-6625-1635-24P (6) DESCRIPTION	USABLE ON CODE	(7) U/M	(8) QTY INC IN UNIT
						GROUP 03 CONTROL,RADIO SET C-7241/ARC			
3	1	PAFZZ	5940-00-707-4262	1947-1	71279	TERMINAL,STUD		EA	1
3	2	XDFFF		117448-1	65597	SWITCH ASSEMBLY		EA	1
3	3	XDFFF		117449-1	65597	SWITCH ASSEMBLY		EA	1
3	4	XDFZZ		270448-0001	65597	POST,ELMCH EQPT		EA	1
3	5	XDFFF		117413-1	65597	PANEL ASSY,FRONT		EA	1
3	6	XDFZZ		60695-1	65597	STUD ASSY, TURNLOCK		EA	4
3	7	PAFZZ	5325-00-543-2418	PF31-2-38	72794	STUD,TURNLOCK,FSTNR		EA	1
3	8	PAFZZ	5360-00-201-0272	PS31-2	72794	SPRING,HELICAL,COMP		EA	1
3	9	PAFZZ	5935-00-921-8790	PC31-2	72794	CONNECTOR,PLUG,ELEC		EA	1
3	10	XDFZZ		284481-1	65597	PANEL,FRONT		EA	1
3	11	XDFZZ		10058	65597	NUT,PLAIN,KNURLED		EA	1
3	12	XDFZZ		270247-1	65597	SPACER,SLEEVE		EA	4
3	13	PAFZZ	5930-00-238-0323	B9001B	81640	SWITCH,PUSH		EA	1
3	14	XDFZZ		MS35190-12	96906	SCREW,MACHINE		EA	12
3	15	PAFZZ	5305-00-054-5652	MS51957-18	96906	SCREW,MACHINE		EA	4
3	49	PAFZZ	5310-00-734-5661	MS35337-78	96906	WASHER,LOCK		EA	11
3	17	PAFZZ	5305-00-054-5648	MS51957-14	96906	SCREW,MACHINE		EA	20
3	18	PAFZZ	6210-00-824-5595	A4996	72914	LIGHT,PANEL		EA	3
3	19	XDFZZ		284499-1	65597	PANEL,FRONT		EA	1
3	20	XDDZZ		60831-2	65597	KNOB		EA	1
3	21	PADZZ	5305-00-719-5330	MS51053-127	96906	SETSCREW		EA	16
3	22	PAFZZ	5310-00-785-2129	76102	65597	WASHER,FLAT		EA	4
3	23	XDFZZ		276368-0001	65597	WASHER,SPRING		EA	4
3	24	PAOZZ	5355-00-728-6448	60827-2	65597	KNOB		EA	4
3	25	PAFZZ	5330-00-971-7983	2-110C147-7	83259	PACKING,PREFORMED		EA	3
3	26	PAFZZ	5310-00-245-8804	276344-1	65597	WASHER,FLAT		EA	3
3	27	PAFZZ	6210-00-725-6170	A5069-14	72914	LENS,LIGHT		EA	3
3	28	PADZZ	6240-00-801-5941	CM328AS10	71744	LAMP,INCANDESCENT		EA	3
3	29	PADZZ	5355-00-913-9601	60825-2	65597	KNOB		EA	3
3	30	PAFFF	5821-00-738-2856	117447-1	65597	BLOCK,MOUNTING		EA	1
3	31	PAFZZ	5305-00-054-5636	MS51957-2	96906	SCREW,MACHINE		EA	2
3	32	PAFZZ	5310-00-543-4652	MS35333-69	96906	WASHER,LOCK		EA	2
3	33	PAFZZ	5360-00-023-9508	61239-1	65597	SPRING,FLAT		EA	1
3	34	PAFZZ	5360-00-023-9387	61237-1	65597	SPRING,FLAT		EA	1
3	35	PAFZZ	3110-00-915-5572	MS19060-12	96906	BALL,BEARING		EA	2
3	36	XDFZZ		302720-1	65597	SETSCREW		EA	2
3	37	XDFZZ		276367-0001	65597	WASHER,SPRING TNSN		EA	2
3	38	XDFZZ		302019-1	65597	STUD,TRANSFER MTG		EA	2
3	39	XDFZZ		270255-1	65597	SPACER,SLEEVE		EA	2

SECTION II					TM11-6625-1635-24P			
(1)	(2)	(3)	(4)	(5)	(6)	(7)	(8)	
ILLUSTRATION								
(A)	(B)	NATIONAL			DESCRIPTION		QTY	
FIG	ITEM	STOCK	PART				INC	
NO	NO	NUMBER	NUMBER	FSCM		USABLE ON CODE	IN	
							UNIT	
3	80	PAFZZ	3110-00-915-5572	MS19060-12	96906	BALL, BEARING	EA	2
3	81	XDFZZ		302720-1	65597	SETSCREW	EA	2
3	82	XDFZZ		276367-0001	65597	WASHER, SPRING, TNSN	EA	2
3	83	XDFZZ		302019-1	65597	STUD, TRANSFER MTG	EA	2
3	84	XDFZZ		270255-1	65597	SPACER, SLEEVE	EA	2
3	85	XDFZZ		MS35190-7	96906	SCREW, MACHINE	EA	2
3	87	XDFZZ		302711-1	65597	SCREW, MACHINE	EA	2
3	88	PAFFF	5821-00-736-5888	117444-1	65597	BLOCK SUBASSEMBLY	EA	1
3	89	PAFZZ	5305-00-054-5636	MS51957-2	96906	SCREW, MACHINE	EA	2
3	90	PAFZZ	5310-00-543-4652	MS35333-69	96906	WASHER, LOCK	EA	2
3	91	PAFZZ	3110-00-915-5572	MS19060-12	96906	BALL, BEARING	EA	2
3	92	XDFZZ		302720-1	65597	SETSCREW	EA	2
3	93	XDFZZ		276367-0001	65597	WASHER, SPRING	EA	2
3	94	XDFZZ		302019-1	65597	STUD, TRANSFER MTG	EA	2
3	35	XDFZZ		302711-1	65597	SCREW, MACHINE	EA	2
3	96	PAFZZ	5360-00-023-9379	61238-1	65597	SPRING, FLAT	EA	1
3	97	PAFZZ	5360-00-023-9508	61239-1	65597	SPRING, FLAT	EA	1
3	98	PAFZZ	5821-00-736-5885	117406-1	65597	DIAL ASSEMBLY	EA	1
3	99	PAFZZ	5365-00-962-5523	276286-1	65597	SHIM	EA	2

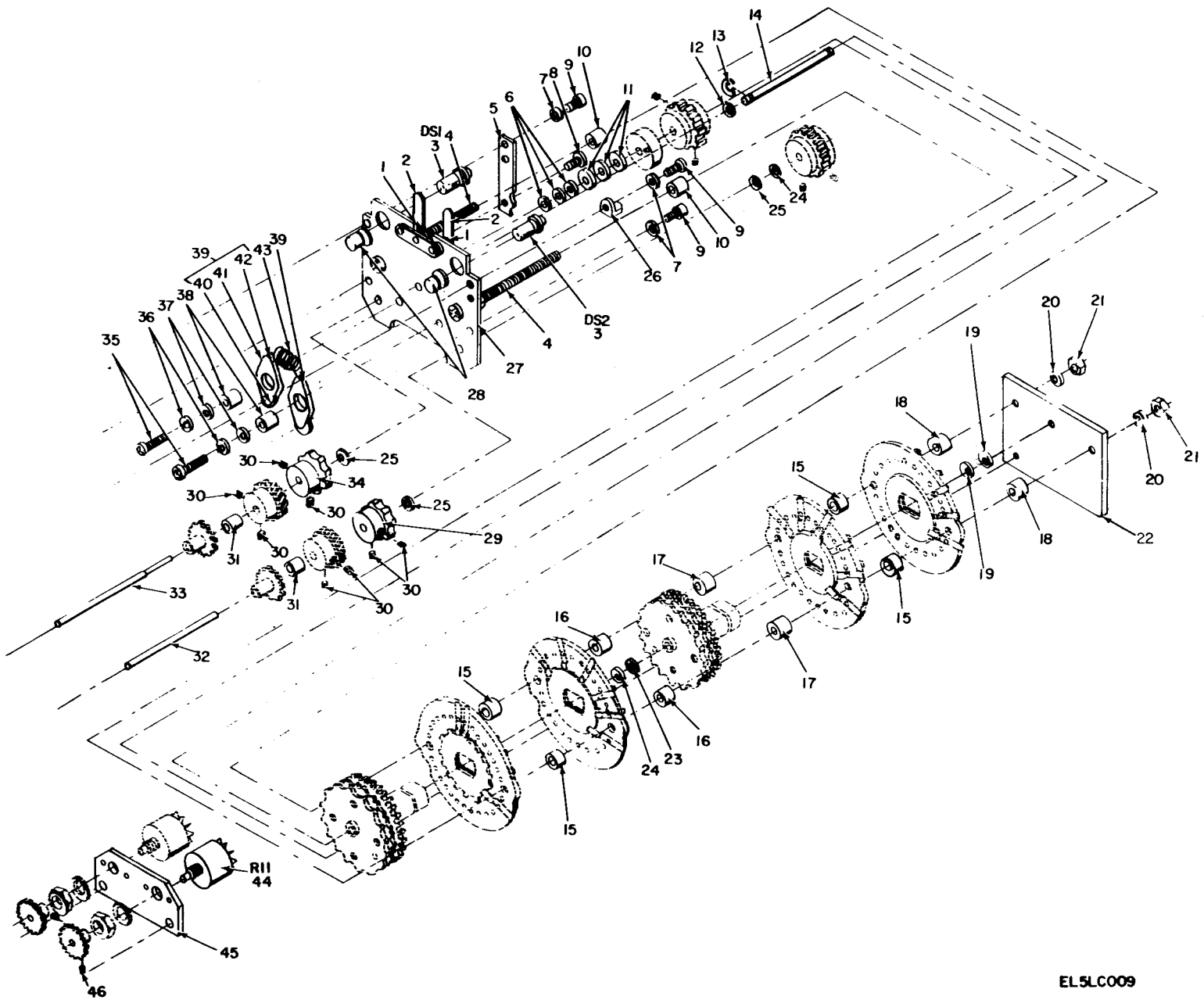


Figure 4. Control, Radio Set C-7241/ARC, Switch Assembly 117449-1.

EL5LC009

SECTION II (1) ILLUSTRATION (A) FIG NO		(2) (B) ITEM NO	(3) NATIONAL STOCK NUMBER	(4) PART NUMBER	(5) FSCM	TM11-6625-1635-24P (6) DESCRIPTION	(7) USABLE ON CODE U/M	(8) QTY INC IN UNIT
4	1	XDFZZ3		77937-1	65597	TAP BAR,DIAL LIGHT	EA	2
4	2	XDFZZ	5999-00-401-9608	82335-1	65597	CONTACT,ELECTRICAL	EA	2
4	3	PADZZ	6240-00-801-5941	CM328AS10	71744	LAMP, INCANDESCENT	EA	2
4	4	XDFZZ		302710-1	65597	SCREW,MACHINE	EA	2
4	5	XDFZZ		284494-1	65597	STOP,PLATE,VHF COMM	EA	1
4	6	PAFZZ	5310-00-245-8799	276326-1	65597	WASHER,FLAT	EA	V
4	7	PAFZZ	5310-00-734-5661	MS35337-78	96906	WASHER,LOCK	EA	5
4	8	XDFZZ		302718-1	65597	SCREW,MACHINE	EA	1
4	9	PAFZZ	5305-00-054-5648	MS51957-14	96906	SCREW,MACHINE	EA	3
4	10	PAFZZ	5970-00-723-9685	270288-3	65597	INSULATOR,BUSHING	EA	2
4	11	XDFZZ		60829-1	65597	WASHER,KEY	EA	3
4	12	PAFZZ	5310-00-245-8806	276340-1	65597	WASHER,FLAT	EA	V
4	13	PAFZZ	5365-00-816-4239	5133-12MD	79136	RING,RETAINING	EA	1
4	14	XDFZZ		71590-1	65597	SHAFT,STRAIGHT	EA	1
4	15	PAFZZ	5970-00-723-9686	270288-4	65597	INSULATOR,BUSHING	EA	4
4	16	PAFZZ	5970-00-904-6251	270288-5	65597	INSULATOR,BUSHING	EA	2
4	17	PAFZZ	5970-00-723-9684	270288-2	65597	INSULATOR,BUSHING	EA	2
4	18	PAFZZ	5970-00-723-9683	270288-1	65597	INSULATOR,BUSHING	EA	2
4	19	PAFZZ	5365-00-935-8945	276373-0001	65597	SHIM	EA	V
4	20	PAFZZ	5310-00-722-5998	MS15795-805	96906	WASHER,FLAT	EA	V
4	21	PAFZZ	5310-00-274-8321	22NKM62	72962	NUT,SLFLKG,CAP	EA	2
4	22	XDFZZ		284852-1	81349	PLATE,REAR CROSS	EA	1
4	23	PAFZZ	5310-00-917-4721	276342-1	65597	WASHER,FLAT	EA	V
4	24	PAFZZ	5310-00-236-4227	276341-1	65597	SHIM	EA	V
4	25	XDFZZ		276325-1	65597	SHIM	EA	V
4	26	PAFZZ	5940-00-156-7431	75-120	79963	TERMINAL,LUG	EA	1
4	27	XDFZZ		284483-1	65597	PLATE,SWITCH MTG	EA	1
4	28	XDFZZ		1813-2LW5-20	97539	FILTER,SIGNAL LIGHT	EA	2
4	29	PAFZZ	5821-00-736-5872	10846-1	65597	DETENT,TRANSCIEVER	EA	1
4	30	XDFZZ		GP1-047X312-12	73957	PIN,GRVD,HEADLESS	EA	8
4	31	XDFZZ		270282-1	65597	SPACER,SLEEVE	EA	2
4	32	XDFZZ		71580-1	65597	SHAFT,SHOULDERED	EA	1
4	33	XDFZZ		71587-1	65597	SHAFT,SHOULDERED	EA	1
4	34	PAFZZ	5821-00-736-5871	10845-1	65597	DETENT,TRANSCIEVER	EA	1
4	35	PAFZZ	5305-00-054-5649	MS51957-15	96906	SCREW,MACHINE	EA	2
4	36	PAFZZ	5310-00-933-8118	MS35338-78	96906	WASHER,LOCK	EA	2
4	37	PAFZZ	5310-00-595-6211	MS15795-803	96906	WASHER,FLAT	EA	2
4	38	XDFZZ		75645-1	65597	SPACER,SLEEVE	EA	2
4	39	PAFZZ	5821-00-736-5887	117443-1	65597	ARM ASSEMBLY,DETENT	EA	2
4	40	XDFZZ		10849-1	65597	SLEEVE,ROLLER	EA	1

SECTION II		TM11-6625-1635-24P						
(1)	(2)	(3)	(4)	(5)	(6)	(7)	(8)	
ILLUSTRATION								
(A)	(B)	NATIONAL			DESCRIPTION		QTY	
FIG	ITEM	STOCK	PART				INC	
NO	NO	NUMBER	NUMBER	FSCM		USABLE ON CODE U/M	IN	
							UNIT	
4	41	XDFZZ		10850-1	65597	ANCHOR, SPRING	EA	1
4	42	XDFZZ		10848-1	65597	SPACER, SLEEVE	EA	1
4	43	PAFZZ	5360-00-023-9545	10851-1	65597	SPRING, HELICAL, EXTE	EA	1
4	44	PAFZZ	5905-00-878-4666	GA2G032F501BA	01121	RESISTOR, VARIABLE, N	EA	1
4	45	XDFZZ		284485-1	65597	PLATE, MTG, RES SW	EA	1
4	46	XDFZZ		302721-1	65597	SETSCREW	EA	2

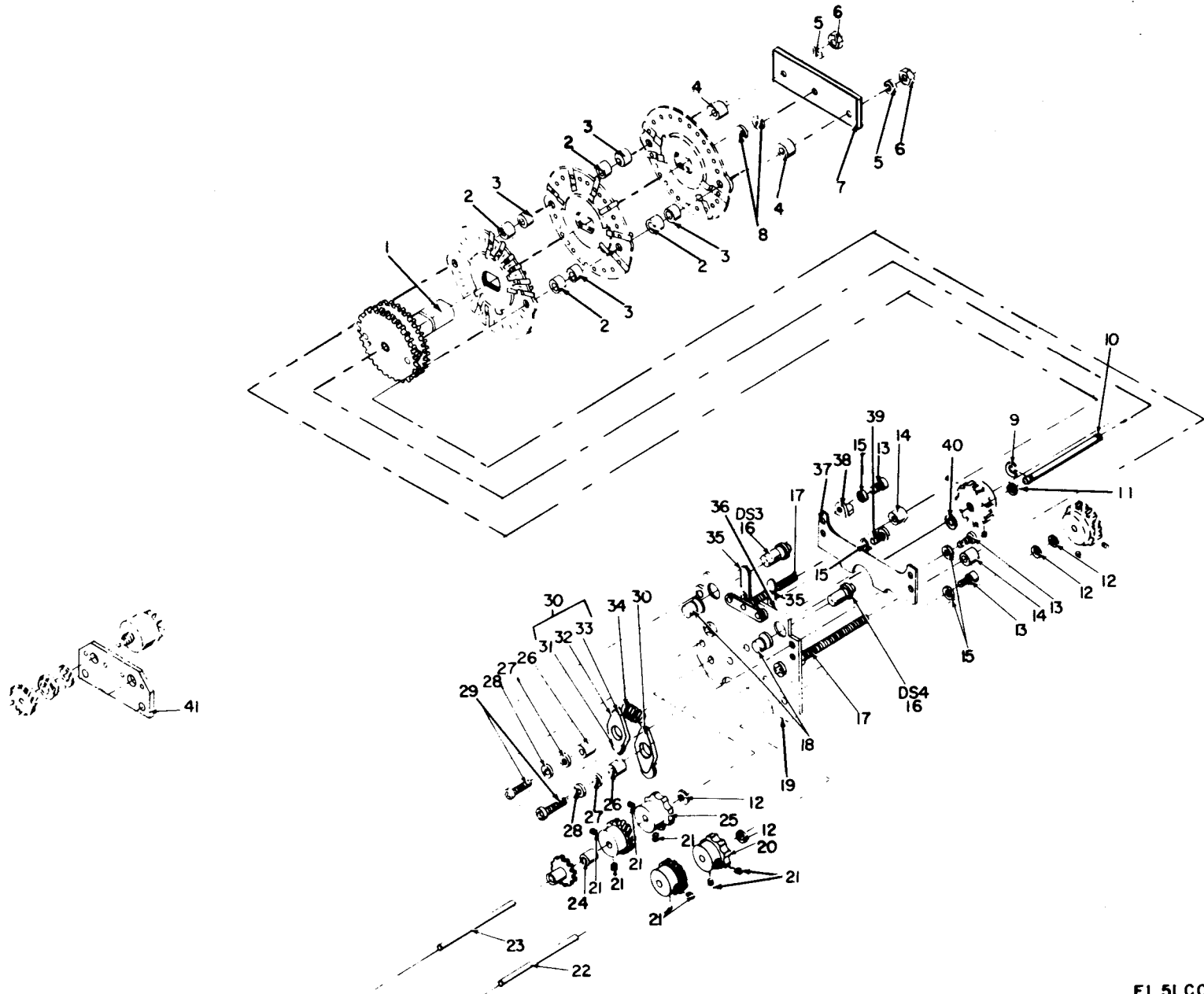


Figure 5. Control, Radio Set C-7241/ARC, Switch Assembly 117448-1.

EL 5LCO10

SECTION II (1) ILLUSTRATION (A) FIG NO		(2) (B) ITEM NO	(3) NATIONAL STOCK NUMBER	(4) PART NUMBER	(5) FSCM	TM11-6625-1635-24P (6) DESCRIPTION	(7) USABLE ON CODE U/M	(8) QTY INC IN UNIT
5	1	XDFZZ		71586-1	65597	SHAFT, SHOULDERED	EA	1
5	2	PAFZZ	5970-00-723-9683	270288-1	65597	INSULATOR, BUSHING	EA	4
5	3	PAFZZ	5970-00-723-9685	270288-3	65597	INSULATOR, BUSHING	EA	4
5	4	PAFZZ	5970-00-723-9686	270288-4	65597	INSULATOR, BUSHING	EA	2
5	5	PAFZZ	5310-00-550-3715	MS35333-70	96906	WASHER, LOCK	EA	2
5	6	PAFZZ	5310-00-274-8321	22NKM62	72962	NUT, SLFLKG, CAP	EA	2
5	7	XDFZZ		77921-1	65597	CROSSBAR, REAR, NAC	EA	1
5	8	PAFZZ	5310-00-917-4721	276342-1	65597	WASHER, FLAT	EA	V
5	9	PAFZZ	5365-00-816-4239	5133-12MD	79136	RING, RETAINING	EA	1
5	10	XDFZZ		71589-1	65597	SHAFT, STRAIGHT	EA	1
5	11	PAFZZ	5310-00-245-8806	276340-1	65597	WASHER, FLAT	EA	V
5	12	XDFZZ		276325-1	65597	SHIM	EA	V
5	13	PAFZZ	5305-00-054-5648	MS51957-14	96906	SCREW, MACHINE	EA	7
5	14	PAFZZ	5970-00-723-9684	270288-2	65597	INSULATOR, BUSHING	EA	2
5	15	PAFZZ	5310-00-734-5661	MS35337-78	96906	WASHER, LOCK	EA	5
5	16	PADZZ	6240-00-801-5941	CM328AS10	71744	LAMP, INCANDESCENT	EA	2
5	17	XDFZZ		302709-1	65597	SCREW, MACHINE	EA	2
5	18	XDFZZ		1813-2LW5-20	97539	FILGTER, SIGNAL LIGHT	EA	2
5	19	XDFZZ		284483-1	65597	PLATE, SWITCH MTG	EA	1
5	20	PAFZZ	5821-00-736-5872	10846-1	65597	DETENT, TRANSCIEVER	EA	1
5	21	XDFZZ		302720-1	65597	SETSCREW	EA	8
5	22	XDFZZ		71596-1	65597	SHAFT, STRAIGHT	EA	1
5	23	XDFZZ		71580-1	65597	SHAFT, SHOULDERED	EA	1
5	24	XDFZZ		270282-1	65597	SPACER, SLEEVE	EA	1
5	25	PAFZZ	5821-00-736-5871	10845-1	65597	DETENT, TRANSCIEVER	EA	1
5	26	XDFZZ		75645-1	65597	SPACER, SLEEVE	EA	2
5	27	PAFZZ	5310-00-595-6211	MS15795-803	96906	WASHER, FLAT	EA	2
5	28	PAFZZ	5310-00-933-8118	MS35338-78	96906	WASHER, LOCK	EA	2
5	29	PAFZZ	5305-00-054-5649	MS51957-15	96906	SCREW, MACHINE	EA	2
5	30	PAFFF	5821-00-736-5887	117443-1	65597	ARM ASSEMBLY, DETENT	EA	2
5	31	XDFZZ		10849-1	65597	SLEEVE, ROLLER BRG	EA	1
5	32	XDFZZ		10850-1	65597	ANCHOR, SPRING	EA	1
5	33	XDFZZ		10848-1	65597	SPACER, SLEEVE	EA	1
5	34	PAFZZ	5360-00-023-9545	10851-1	65597	SPRING, HELICAL, EXTE	EA	1
5	35	XDFZZ	5999-00-401-9608	82335-1	65597	CONTACT, ELECTRICAL	EA	2
5	36	XDFZZ		77937-1	65597	TAP BAR, DIAL LIGHT	EA	2
5	37	XDFZZ		284495-1	65597	STOP, PLATE, NAV MC	EA	1
5	38	PAFZZ	5940-00-156-7431	75-120	79963	TERMINAL, LUG	EA	1
5	39	XDFZZ		302718-1	65597	SCREW, MACHINE	EA	1
5	40	PAFZZ	5310-00-245-8799	276326-1	65597	WASHER, FLAT	EA	V

SECTION II				TM11-6625-1635-24P			
(1)	(2)	(3)	(4)	(5)	(6)	(7)	(8)
ILLUSTRATION							
(A)	(B)	NATIONAL		DESCRIPTION			QTY
FIG	ITEM	STOCK	PART				INC
NO	NO	CODE	NUMBER	FSCM	USABLE ON CODE	U/M	IN
							UNIT
5	41	XDFZZ	284485-1	65597	PLATE,MTG,RES	EA	1

NATIONAL STOCK NUMBER AND PART NUMBER INDEX

NOTE: LATEST NATIONAL STOCK NUMBER AND PART NUMBER ASSIGNMENTS ARE INCLUDED AT END OF INDEX

STOCK NUMBER	FIGURE NO	NO	STOCK NUMBER	FIGURE NO	ITEM NO
5360-00-023-9379	3	51	5975-00-405-0429	2	22
5360-00-023-9379	3	96	5975-00-405-0430	2	21
5360-00-023-9387	3	34	5821-00-409-8193	2	42
5360-00-023-9387	3	79	5970-00-410-2548	2	24
5360-00-023-9508	3	33	5995-00-426-1102	1	28
5360-00-023-9508	3	50	5905-00-465-0185	2	48
5360-00-023-9508	3	78	5985-00-491-4305	1	18
5360-00-023-9508	3	97			
5360-00-023-9545	4	43	5940-00-502-8294	2	64
5360-00-023-9545	5	4	5310-00-543-4652	3	32
5305-00-054-5635	3	59	5310-00-543-4652	3	44
5305-00-054-5636	3	31	5310-00-543-4652	3	77
5305-00-054-5636	3	43	5310-00-543-5933	2	96
5305-00-054-5636	3	76	5310-00-550-1059	2	83
5305-00-054-5638	1	38	5310-00-550-3715	3	60
5305-00-054-5646	3	74	5310-00-550-3715	5	5
5305-00-054-5647	2	65	5935-00-553-9352	2	6
5305-00-054-5648	1	4	5940-00-557-1629	2	23
5305-00-054-5648	2	59	5310-00-595-6211	2	61
5305-00-054-5648	3	17	5310-00-595-6211	4	37
5305-00-054-5648	4	9	5310-00-595-6211	5	27
5305-00-054-5648	5	13	5310-00-616-3555	2	107
5305-00-054-5649	2	8	6210-00-617-1551	2	85
5305-00-054-5649	4	35	5310-00-622-1724	1	13
5305-00-054-5649	5	29	5365-00-632-3102	2	54
5305-00-054-5652	2	53	5920-00-636-0679	1	16
5305-00-054-5652	3	15	5930-00-655-1514	2	15
5305-00-054-5653	1	3	5930-00-655-1575	2	97
			5340-00-682-1617	2	16
5305-00-054-6656	2	9	5940-00-688-6017	2	14
5305-00-054-6671	2	11	5940-00-707-4262	3	1
5305-00-059-3659	1	36	8115-00-708-0112	1	10
5305-00-059-3660	2	4	5935-00-716-6578	2	67
5310-00-065-0179	2	84	5305-00-719-5330	3	21
5945-00-068-6429	2	60	5310-00-722-5998	2	18
5305-00-068-6605	1	1	5310-00-722-5998	4	20
5325-00-074-3301	1	9	5970-00-723-9683	4	18
5305-00-088-9666	2	7	5970-00-723-9683	5	2
5905-00-106-1247	2	50	5970-00-723-9684	4	17
5905-00-110-0991	2	49	5970-00-723-9684	5	14
5320-00-117-6829	2	12	5970-00-723-9685	4	10
5320-00-117-6937	2	28	5970-00-723-9685	5	3
5320-00-117-6938	2	62	5970-00-723-9686	4	15
5905-00-131-1256	6	45	5970-00-723-9686	5	4
5310-00-137-3068	2	76	6210-00-725-6170	3	27
5910-00-138-1681	2	106	5920-00-727-1452	2	80
5940-00-143-4771	2	71	5355-00-728-6448	3	24
5940-00-144-2269	1	27	5821-00-736-5871	4	34
6240-00-155-7836	2	77	5821-00-736-5871	5	25
5940-00-156-7431	4	26	5821-00-736-5872	4	29
5940-00-156-7431	5	38	5821-00-736-5872	5	20
5961-00-170-4430	2	101	5821-00-736-5877	3	54
5310-00-180-0277	2	90	5821-00-736-5879	3	56
5935-00-192-4729	2	92	5821-00-736-5885	3	98
5360-00-201-0272	3	8	5821-00-736-5887	4	39
5935-00-201-2411	1	19	5821-00-736-5887	5	30
5999-00-204-8350	2	25	5821-00-736-5888	3	88
5940-00-204-8966	2	13	5821-00-736-5899	3	42
5920-00-232-3675	1	17	5821-00-736-5913	3	75
			5821-00-738-2856	3	30
5340-00-236-3837	3	66	5305-00-754-4546	2	111
5310-00-236-4227	4	24			
5310-00-241-6604	1	33	5310-00-782-1349	2	56
5999-00-244-5150	2	79	5310-00-785-2129	3	22
5310-00-245-8799	4	6	5305-00-805-9748	2	82
5310-00-245-8799	5	40	5365-00-816-4239	3	52
5310-00-245-8804	3	26	5365-00-816-4239	4	13
5310-00-245-8806	4	12	5365-00-816-4239	5	9
5310-00-245-8806	5	11	6210-00-824-5595	3	18
5905-00-247-7587	2	47	5999-00-829-2683	2	83
5310-00-255-5143	2	70	5940-00-834-9660	2	103
5310-00-255-5203	2	109	5935-00-835-0508	1	24
5310-00-257-6215	2	110	5940-00-838-2651	1	29
5940-00-269-2219	2	87	6210-00-842-1679	2	78
5325-00-276-6228	2	1			
5905-00-279-2650	2	104			
5905-00-299-2020	2	105			
5940-00-356-2493	2	89	5310-00-857-5548	3	70
5999-00-401-9608	4	2	5905-00-878-4666	4	44
5999-00-401-9608	5	35	5310-00-880-5978	2	29

SECTION IV

NATIONAL STOCK NUMBER AND PART NUMBER INDEX

TM11-6625-1635-24P

STOCK NUMBER	FIGURE NO	ITEM NO	STOCK NUMBER	FIGURE NO	ITEM NO
5935-00-881-3241	2	68			
5920-00-892-9311	2	66	5821-00-933-9606	1	14
5970-00-904-6251	4	16	5821-00-933-9608	1	40
5355-00-913-9601	3	29	5831-00-933-9822	1	41
5355-00-914-1974	2	81	5910-00-934-2924	2	46
5935-00-914-2384	2	72	5310-00-934-9748	1	5
3110-00-915-5572	3	35	5310-00-934-9748	2	58
3110-00-915-5572	3	45	5310-00-934-9759	2	31
3110-00-915-5572	3	80	5310-00-934-9765	2	40
3110-00-915-5572	3	91	5365-00-935-8945	4	19
5310-00-917-7721	4	23			
5310-00-917-4721	5	8			
5935-00-921-8790	3	9	5120-00-949-6692	1	21
5310-00-929-6395	2	36	5935-00-951-5033	1	30
5310-00-933-8118	1	2	5365-00-962-5523	3	99
5310-00-933-8118	2	7	5330-00-971-7983	3	25
5310-00-933-8118	4	36	5310-00-982-5000	1	32
5310-00-933-8118	5	28	5975-00-988-0649	2	26
5310-00-933-8119	2	30	5310-00-999-4033	2	108
5310-00-933-8120	2	41			
5821-00-933-9605	1	37			

PART NUMBER	FSCM	FIG NO	ITEM NO	PART NUMBER	FSCM	FIG NO	ITEM NO
A131023-1	37942	2	94	MS35190-7	96906	3	85
A4996	72914	3	18	MS35333-69	96906	3	90
AS069-14	72914	3	27	MS35333-69	96906	3	32
B113812	37942	2	93	MS35333-69	96906	3	44
				MS35333-69	96906	3	77
CK62BX102M	81349	2	106	MS35333-70	96906	3	60
C1611DA1C	80058	1	41	MS35333-70	96906	5	5
C7241ARC	80058	1	37	MS35333-71	96906	2	107
DC20963	71468	2	67	MS35333-73	96906	2	96
				MS35333-76	96906	2	90
DF30BC	58474	2	87	MS35337-78	96906	3	16
DF30RC	58474	2	89	MS35337-78	96906	4	7
DPX2F40C1SF40C1S3380003	71468	1	30	MS35337-78	96906	5	15
FHN26G1	81349	2	86	MS35338-135	96906	1	2
F01A250V1-16A	81349	1	17	MS35338-135	96906	2	57
F03B32V10A	81349	2	80	MS35338-136	96906	2	36
GA2G032F501BA	01121	4	44	MS35338-137	96906	2	30
GA2G032S103UA	01121	2	100	MS35338-138	96906	2	41
GP1-047X312-12	73957	4	30	MS35338-77	96906	3	73
G51HB	03296	1	9	MS35338-78	96906	4	36
JU033	80058	2	92	MS35338-78	96906	5	28
MS15795-803	96906	2	61	MS35431-6	96906	1	29
MS15795-803	96906	4	37	MS35489-9	96906	2	1
MS15795-803	96906	5	27	MS35649-244	96906	1	5
MS15795-804	96906	2	56	MS35649-244	96906	2	58
MS15795-805	96906	2	18	MS35649-264	96906	2	35
MS15795-805	96906	4	20	MS35649-284	96906	2	31
MS15795-807	96906	2	29	MS35650-304	96906	2	40
MS15795-808	96906	1	42				
MS15795-808	96906	2	3	MS51053-112	96906	2	82
MS16208-7	96906	1	26	MS51053-127	96906	3	21
MS17830-40	96906	1	3	MS51957-1	96906	3	59
MS19060-12	96906	3	35	MS51957-12	96906	3	74
MS519060-12	96906	3	45	MS51957-13	96906	2	65
MS19060-12	96906	3	80	MS51957-14	96906	1	4
MS19060-12	96906	3	91	MS51957-14	96906	2	59
MS20426AD3-3	96906	2	28	MS51957-14	96906	3	17
MS20426AD3-4	96906	2	62	MS51957-14	96906	4	9
MS2047UAD4-7	96906	2	12	MS51957-14	96906	5	13
MS21044D04	96906	3	70	MS51957-15	96906	2	8
MS21045C04	96906	1	32	MS51957-15	96906	4	35
MS21919DG12	96906	2	16	MS51957-15	96906	5	29
MS24693C51	96906	2	7	MS51957-18	96906	2	53
MS24693C6	96906	1	31	MS51957-18	96906	3	15
MS25036-102	96906	2	13	MS51957-19	96906	1	3
MS25036-103	96906	2	71	MS51957-2	96906	3	31
MS25081C4	96906	2	108	MS51957-2	96906	3	43
MS25082C21	96906	2	76	MS51957-2	96906	3	76
MS25237-327	96906	2	77				
MS3116E20-39SY	96906	2	72	MS51957-28	96906	2	34
MS35058-22	96906	2	15	MS51957-32	96906	2	9
MS35059-22	96906	2	97	MS51957-4	96906	1	38
MS35190-12	96906	3	14	MS51957-46	96906	2	11
MS35190-7	96906	3	40	MS51958-63	96906	1	36

PART NUMBER	FSCM	FIG NO	ITEM NO	PART NUMBER	FSCM	FIG NO	ITEM NO
MS51958-64	96906	2	4	117406-1	65597	3	98
M39003/01-2139	81349	2	46	117413-1	65597	3	5
M4721	01121	2	83	117443-1	65597	4	39
M4748	01121	2	84	117443-1	65597	5	30
NAS43DD0-16	80205	2	54	117444-1	65597	3	88
				117445-1	65597	3	42
NC302M	05820	2	38	117446-1	65597	3	75
PC31-2	72794	3	9	117447-1	65597	3	30
				117448-1	65597	3	2
				117449-1	65597	3	3
PS31-2	72794	3	8				
PT02A20-39PY	77820	3	57				
PT02A20-39PZ	77820	3	58	1724-3	71279	2	52
RCR32G121JR	81349	2	47	1813-2LW5-20	97539	4	28
RCR32G151JS	81349	2	49	1813-2LW5-20	97539	5	18
RCR32G221JS	81349	2	50	1947-1	71279	3	1
RCR32G330JR	81349	2	48	2-110C147-7	83259	3	25
				25C	76545	2	25
RCR32G820JS	81349	2	45	26BLACK	76545	2	26
RC32GF273J	81349	2	105	266022-0001	65597	1	35
RC32GF562J	81349	2	104	266023-0002	65597	3	61
RF218ARC	80058	1	14	266461-0001	65597	1	12
R260003-1	04071	2	5	267498-0002	65597	1	6
R260003-2	04071	2	21	270247-1	65597	3	12
R260003-3	04071	2	22	270255-1	65597	3	39
R260139-1	04071	1	39	270255-1	65597	3	84
R260147-1	04071	1	1	270282-1	65597	4	31
R361682-1	04071	1	25	270282-1	65597	5	24
R361815-1	04071	2	55	270283-1	65597	3	68
R361820-1	04071	2	42	270288-1	65597	4	18
R362188-4	04071	1	7	270288-1	65597	5	2
R362553-1	04071	2	37	270288-2	65597	4	17
R362557-1	04071	1	28	270288-2	65597	5	14
R362631-1	04071	2	44	270288-3	65597	4	10
R454655-1	04071	2	43	270288-3	565597	5	3
R454658-1	04071	2	66	270288-4	65597	4	15
SB3003PARC	80058	1	40	270288-4	65597	5	4
				270288-5	65597	4	16
ST1000SL	98291	2	103	270448-0001	65597	3	4
SX560	72794	2	63	2720-56225F505	06540	2	74
				276286-1	65597	3	99
UG274AU	81349	1	19	276325-1	65597	4	25
UG88GU	80058	1	24	276325-1	65597	5	12
U94AU	80058	2	6	276326-1	65597	4	6
WKJ6D26-5VDC	02288	2	60	276326-1	65597	5	40
				276340-1	65597	4	12
				276340-1	65597	5	11
028255-0002	65597	2	24	276341-1	65597	4	24
035692LKW	65597	2	110	276342-1	65597	4	23
035692NUT	65597	2	109	276342-1	65597	5	8
076020-1200	65597	2	70	276344-1	65597	3	26
				276367-0001	65597	3	37
076131-0000	65597	2	88	276367-0001	65597	3	47
083447-0001	65597	1	10	276367-0001	65597	3	55
083448-0001	65597	1	11	276367-0001	65597	3	82
ICA	28307	1	15	276367-0001	65597	3	93
1N34A	80131	2	101	276368-0001	65597	3	23
				276373-0001	65597	4	19
				28225-1	65597	3	63
100008-1200	65597	2	69	284461-1	65597	3	10
100022-0200	65597	2	91	284482-1	65597	3	72
10058	65597	3	11	284483-1	65597	4	27
101-5030-931	72619	2	85	284483-1	65597	5	19
101-931	72619	2	78	284485-1	65597	4	45
101052-0200	65597	2	33	284485-1	65597	5	41
104826-0001	65597	1	22	284494-1	65597	4	5
10845-1	65597	4	34	284495-1	65597	5	37
10845-1	65597	5	25	284499-1	65597	3	19
10846-1	65597	4	29	284528-1	65597	3	71
10846-1	65597	5	20				
10848-1	65597	4	42	284852-1	81349	4	22
10848-1	65597	5	33	302019-1	65597	3	38
10849-1	65597	4	40	302019-1	65597	3	48
10849-1	65597	5	31	302019-1	65597	3	83
10850-1	65597	4	41	302019-1	65597	3	94
10850-1	65597	5	32	302709-1	65597	5	17
10851-1	65597	4	43	302710-1	65597	4	4
10851-1	65597	5	34	302711-1	65597	3	41
11509A	28480	1	16	302711-1	65597	3	49
117404-1	65597	3	54	302711-1	65597	3	87
117405-1	65597	3	56	302711-1	65597	3	95

PART NUMBER	FSCM	FIG NO	ITEM NO	PART NUMBER	FSCM	FIG NO	ITEM NO
302718-1	65597	4	8	61239-1	65597	3	97
302718-1	65597	5	39	67606-1	65597	1	21
302720-1	65597	3	36	68-1660-26	72962	1	13
302720-1	65597	3	46				
302720-1	65597	3	81				
302720-1	65597	3	92				
302720-1	65597	5	21	700060-0002	65597	1	18
302721-1	65597	4	46	71580-1	65597	4	32
				71580-1	65597	5	23
31888	00779	2	23	71586-1	65597	5	1
320562	00779	1	27	71587-1	65597	4	33
323975	00779	2	14	71589-1	65597	5	10
				71590-1	65597	4	14
				71595-1	65597	3	53
				71596-1	65597	5	22
432956-0001	65597	2	17	75-120	79963	4	26
432959-0001	65597	2	20	75-120	79963	5	38
5133-12MD	79136	3	52	75645-1	65597	4	38
5133-12MD	79136	4	13	75645-1	65597	5	26
5133-12MD	79136	5	9	76102	65597	3	22
				77921-1	65597	5	7
601SP	75382	2	64	77932-1	65597	3	67
60695-1	65597	3	6	77933-1	65597	3	69
60825-2	65597	3	29	77934-1	65597	3	66
60827-2	65597	3	24	77937-1	65597	4	1
60829-1	65597	4	11	77937-1	65597	5	36
60831-2	65597	3	20	82335-1	65597	4	2
60848-1	65597	2	81	82335-1	65597	5	35
61237-1	65597	3	34	89695-1	65597	3	64
61237-1	65597	3	79	89695-2	65597	3	62
61238-1	65597	6	51	89696-1	65597	3	65
61238-1	65597	3	96	903-12	75915	2	99
61239-1	65597	3	33	9157788-29	18876	2	111
61239-1	65597	3	50	9435F1-2	71400	2	79
61239-1	65597	3	78				

LATEST NATIONAL STOCK NUMBER ASSIGNMENTS

STOCK NUMBER	FIGURE NO	ITEM NO	STOCK NUMBER	FIGURE NO	ITEM NO
5305-00-054-5636	3	89	5310-00-543-4652	3	90
5310-00-085-3606	2	99	5310-00-596-4892	2	75
5306-00-087-1628	1	26	5305-00-717-6955	1	23
5310-00-208-9255	2	95	5940-00-764-1028	2	52
5905-00-228-6088	2	51	6240-00-801-5941	3	28
5930-00-238-0323	3	13	6240-00-801-5941	4	3
			6240-00-801-5941	5	16
5310-00-274-8321	4	21	3040-00-880-0497	3	53
5310-00-274-8321	5	6	5310-00-905-3081	1	34
5940-00-275-7854	2	102	5310-00-928-2690	3	73
5940-00-318-6586	2	32	6625-00-931-4489	2	2
5310-00-534-0827	2	98	5821-00-933-9607	1	20
5325-00-543-2418	3	7			

LATEST PART NUMBER ASSIGNMENTS

PART NUMBER	FSCM	FIG NO	ITEM NO	PART NUMBER	FSCM	FIG NO	ITEM NO
B9001B	81640	3	13	1212-02435	55026	2	2
MS21044C3	81640	3	13	1212-02435	55026	2	2
MS2108303	96906	1	34	22NKM62	72962	4	21
MS51957-2	96906	3	89	22NKM62	72962	5	6
MS51963-1	96906	1	23	3010-22	78189	2	75
PF31-2-38	72794	3	7	601-3700-4	75382	2	32
RCR32G331JS	81349	2	51	601-5H	75382	2	102
117875-0001	65597	1	20				

ADDITIONAL LATEST NATIONAL STOCK NUMBER ASSIGNMENTS

STOCK NUMBER	FIG NO	ITEM NO	STOCK NUMBER	FIG NO	ITEM NO
5935-00-051-4779	3	57	5310-00-728-5502	2	27
5305-00-054-6652	2	34	5310-00-734-5661	3	16
5305-00-054-6654	2	10	5310-00-734-5661	4	7
5905-00-194-8342	2	100	5310-00-734-5661	5	15
5310-00-429-2274	2	69	5935-00-843-9008	2	73
5935-00-504-4023	2	93	5310-00-857-5547	2	19
5310-00-619-1149	1	42	5310-00-857-5548	1	8
5310-00-619-1148	2	3	5310-00-934-9761	2	35
			5961-00-935-4912	2	39

ADDITIONAL LATEST PART NUMBER ASSIGNMENTS

PART NUMBER	FSCM	FIG NO	ITEM NO	PART NUMBER	FSCM	FIG NO	ITEM NO
CM328AS10	71744	3	28	MS21044D06	96906	2	19
CM328AS10	71744	4	3	MS21077-3	96906	2	27
CM328AS10	71744	5	16	MS35179-1094A	96906	2	73
DCM37SC33	71468	2	68	MS51957-30	96906	2	10
MS21044D04	96906	1	8				



THEN...JOT DOWN THE DOPE ABOUT IT ON THIS FORM, TEAR IT OUT, FOLD IT AND DROP IT IN THE MAIL!

SOMETHING WRONG WITH THIS MANUAL?

FROM: (YOUR UNIT'S COMPLETE ADDRESS)
 Commander
 Stateside Army Depot
 ATTN: AMSTA-US
 Stateside, N.J. 07703
 DATE 10 July 1975

PUBLICATION NUMBER: TM 11-5840-340-20P
 DATE: 23 Jan 78
 TITLE: Radar Set AN/PRC-76

BE EXACT...PIN-POINT WHERE IT IS				IN THIS SPACE TELL WHAT IS WRONG AND WHAT SHOULD BE DONE ABOUT IT:
PAGE NO.	PARA-GRAPH	FIGURE NO.	TABLE NO.	
33				For item 2, change the NSN to read: 5835-00-134-9186. <u>Reason:</u> Accuracy.
44		19		Identify the cover on the junction box (item no. 5). <u>Reason:</u> It is a separate item and is not called out on figure 19.
45				Add the cover of the junction box as an item in the listing for figure 19. <u>Reason:</u> Same as above.

TEAR ALONG DOTTED LINE

FE

L

PR

M

A

S

TYPED NAME, GRADE OR TITLE, AND TELEPHONE NUMBER
 SSG I. M. Despirito 999-1776

SIGN HERE:
SSG I. M. Despirito



SOMETHING WRONG WITH THIS MANUAL?

THEN...JOT DOWN THE DOPE ABOUT IT ON THIS FORM, TEAR IT OUT, FOLD IT AND DROP IT IN THE MAIL!

FROM: (YOUR UNIT'S COMPLETE ADDRESS)

DATE

PUBLICATION NUMBER

TM 11-6625-1635-24P

DATE

28 DEC 78

TITLE

MAINTENANCE KIT, ELECTRONIC EQUIPMENT MK-1004/ARC

BE EXACT. . .PIN-POINT WHERE IT IS

IN THIS SPACE TELL WHAT IS WRONG AND WHAT SHOULD BE DONE ABOUT IT:

PAGE NO.	PARA-GRAPH	FIGURE NO.	TABLE NO.
----------	------------	------------	-----------

TEAR ALONG DOTTED LINE

TYPED NAME, GRADE OR TITLE, AND TELEPHONE NUMBER

SIGN HERE:

FILL IN YOUR
UNIT'S ADDRESS

FOLD BACK

DEPARTMENT OF THE ARMY

OFFICIAL BUSINESS
PENALTY FOR PRIVATE USE, \$300

Commander
US Army Communications and
Electronics Materiel Readiness Command
ATTN: DRSEL-ME-MQ
Fort Monmouth, New Jersey 07703

FOLD BACK

TEAR ALONG DOTTED LINE



SOMETHING WRONG WITH THIS MANUAL?

THEN...JOT DOWN THE DOPE ABOUT IT ON THIS FORM, TEAR IT OUT, FOLD IT AND DROP IT IN THE MAIL!

FROM: (YOUR UNIT'S COMPLETE ADDRESS)

DATE

PUBLICATION NUMBER

TM 11-6625-1635-24P

DATE

28 DEC 78

TITLE MAINTENANCE KIT, ELECTRONIC EQUIPMENT MK-1004/ARC

BE EXACT...PIN-POINT WHERE IT IS

IN THIS SPACE TELL WHAT IS WRONG AND WHAT SHOULD BE DONE ABOUT IT:

PAGE NO.	PARA-GRAPH	FIGURE NO.	TABLE NO.
----------	------------	------------	-----------

TEAR ALONG DOTTED LINE

TYPED NAME, GRADE OR TITLE, AND TELEPHONE NUMBER

SIGN HERE:

FILL IN YOUR
UNIT'S ADDRESS

FOLD BACK

DEPARTMENT OF THE ARMY

OFFICIAL BUSINESS

PENALTY FOR PRIVATE USE, \$300

Commander
US Army Communications and
Electronics Materiel Readiness Command
ATTN: DRSEL-ME-MQ
Fort Monmouth, New Jersey 07703

FOLD BACK

TEAR ALONG DOTTED LINE

By Order of the Secretary of the Army:

BERNARD W. ROGERS
General, United States Army
Chief of Staff

Official:

J. C. PENNINGTON
Brigadier General, United States Army
The Adjutant General

DISTRIBUTION:

To be distributed in accordance with DA Form 12-36, DA Form 12-36 Direct and General Support maintenance requirements for AN/ARC-134.

DEPARTMENT **OF** THE ARMY
US ARMY AG PUBLICATIONS CENTER
1655 WOODSON ROAD
ST. LOUIS, MISSOURI 63114

OFFICIAL BUSINESS
PENALTY FOR PRIVATE USE \$300